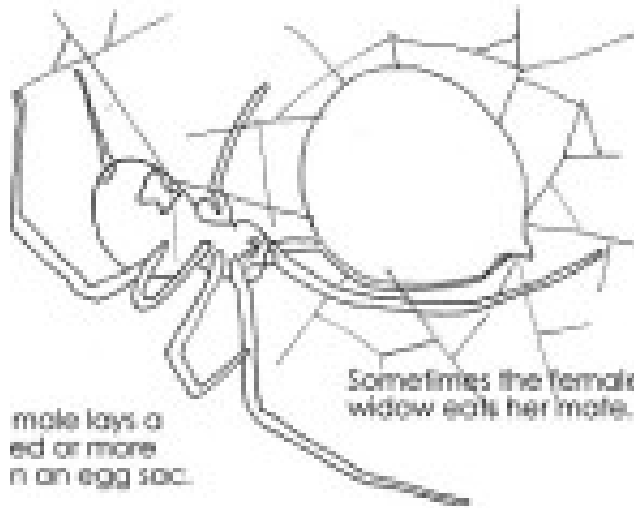
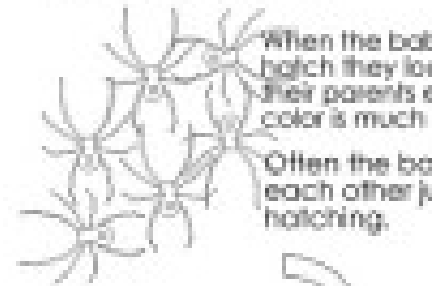


Life Cycle of a Spider Black Widow



male lays a
egg or more
in an egg sac.

Sometimes the female black
widow eats her mate.

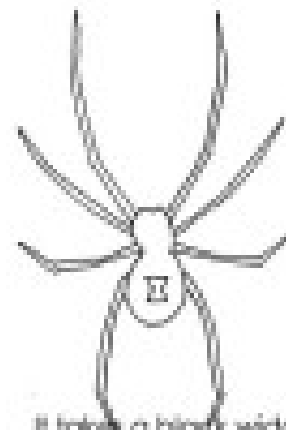


When the baby
hatch they look
like their parents &
color is much
darker.

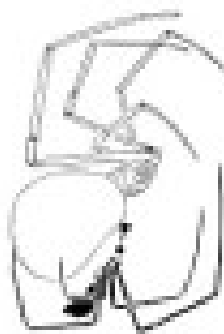
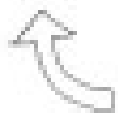
Often the baby
spiders eat each other just
after hatching.



Baby spider
leave the
crawling
ballooning
strands of
silk.



It takes a black widow
between 3 and 10
months to mature into
an adult.



The male and female
mate in spring.

Layers of L