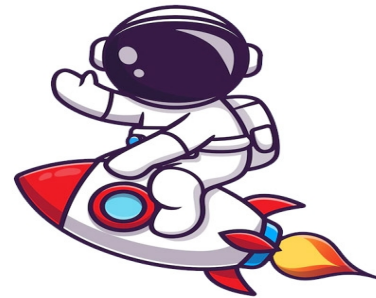


Geography Vocabulary



Name: _____

Date: _____

1. _____ Land surrounded on 3 sides by water
2. _____ large group of islands
3. _____ A narrow strip of land connecting two larger forms
4. _____ A narrow passageway connecting two large bodies of water
5. _____ A portion of an ocean or sea extending into the land; a partially land-locked sea
6. _____ A small body of water set off from the main body
7. _____ A large body of water surrounded by land
8. _____ Piece of land extending into a large body of water
9. _____ An area of elevated flat land
10. _____ Land surrounded on all sides by water, smaller than a continent

island
peninsula
isthmus
gulf

archipelago
cape
lake

plateau
strait
bay