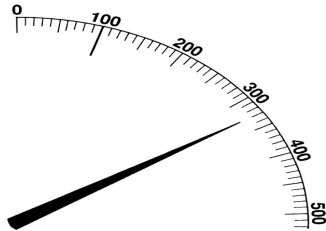


Scales and Dials



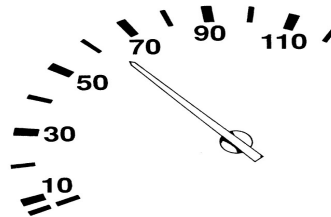
- A. This postal scale for letters is in grams.
1. What weight does the pointer show ?
 2. Why is **100g** marked differently ?
 3. Mark these weights on the outside of the scale:

200g	375g	125g
210g	150g	40g

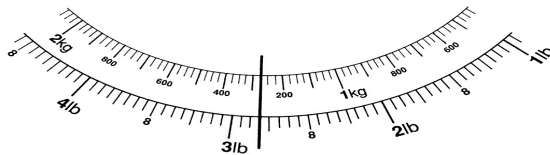
- B. This car speedometer shows the speed in miles per hour (mph).

1. How fast is the car going ?
2. Mark the following speeds:

70 mph	35 mph
88 mph	43 mph
12 mph	25 mph



- C. These kitchen scales show the weight in kilograms and grams on the inside, and pounds and ounces on the outside.



1. What weight does the pointer show:
 - a. in kg & g ?
 - b. in lb & oz ?
2. Mark these weights on the scale:

1.5kg	1kg 150g	625g
1 lb 3 oz	3 lb 14 oz	2 1/2 lb

- D. These bathroom scales show weight in kilograms and in stones and pounds.

1. What weight is the line showing ?
 - In kilograms
 - In stones & pounds
 - In pounds only
2. Mark the following weights:

53kg	8 st 3 lb
77kg	11 st 13 lb

