

**Activity: Digestive System**

- 1: Label the accompanying diagram using your text book **and** any other sources in the classroom.
- 2: Prepare a chart in your notebook listing the following organs and its **function** in digestion (be specific - enzymes produced or secreted, etc.) for the following:(utilize other sources of information in the classroom)

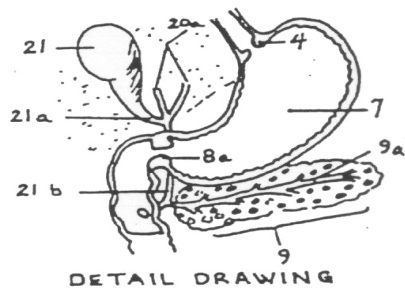
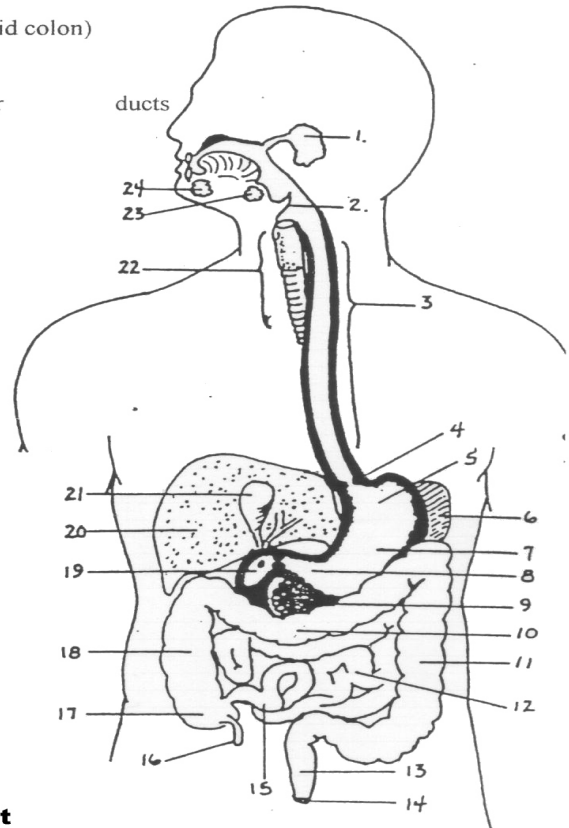
mouth  
stomach  
small intestine (duodenum, jejunum, ileum)  
large intestine (ascending, transverse, descending sigmoid colon)  
rectum  
anus

teeth  
sphincter muscles of the stomach (2)  
pancreas  
gall bladder

tongue  
gall bladder

esophagus

- 1: Parotid Gland**
- 2: Epiglottis**
- 3: Esophagus**
- 4: Cardiac Sphincter**
- 5: Cardiac Region of Stomach**
- 6: Spleen**
- 7: Stomach**
- 8: Pyloric Region of Stomach**
- 8a: Pyloric Sphincter**
- 9: Pancreas**
- 9a: Pancreatic Duct**
- 10: Transverse Colon**
- 11: Descending Colon**
- 12: Jejunum**
- 13: Rectum**
- 14: Anus**
- 15: Ilium**
- 16: Appendix**
- 17: Caecum**



DETAIL DRAWING

- 18: Ascending Colon**
- 19: Duodenum**
- 20: Liver**
- 20a: Hepatic Duct**
- 21: Gall Bladder**
- 21a: Cystic Duct**
- 21b: Common Bile Duct**
- 22: Trachea**
- 23: Submaxillary (Submandibular) Gland**
- 24: Sublingual Gland**