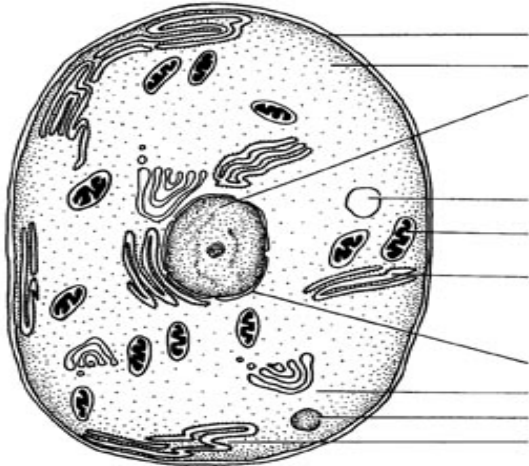


## Organelle Quiz

Number the organelles in the cell diagram and then number their descriptions below.



- 1) cytoplasm
- 2) cell membrane (plasma membrane)
- 3) golgi apparatus
- 4) lysosomes
- 5) mitochondria
- 6) nuclear membrane
- 7) nucleus
- 8) ribosomes
- 9) rough endoplasmic reticulum (rough ER)
- 10) vacuoles

- \_\_\_\_ Each cell has this protective, semipermeable outside layer.
- \_\_\_\_ Inside the cell, this watery medium is where all the organelles float.
- \_\_\_\_ This organelle contains our DNA with all our genetic information.
- \_\_\_\_ The above organelle is surrounded this, which controls what goes in and out.
- \_\_\_\_ These are little grains floating around inside the cell where proteins are made.
- \_\_\_\_ This is made up of folded membrane pathways spotted with the above organelle (little grains).
- \_\_\_\_ These are made up of flat vesicles that package things, like hormones, to leave the cell.
- \_\_\_\_ These are vesicles with digestive enzymes inside that break down things, like bacteria, that the cell doesn't need.
- \_\_\_\_ These are membrane sacs for storing things.
- \_\_\_\_ These have a double membrane that folds in on itself forming little fingers called cristae.  
They break down sugar to make ATP, which is used by the cell as energy.