

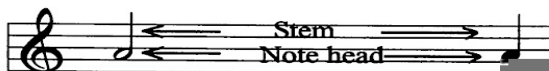
## LINE NOTES AND SPACE NOTES

Musical notes come in many shapes. Whole notes are made of a circle. (For more information on whole notes, see Lesson 12.)



**WHOLE NOTE**

Half notes and quarter notes each have a head (or circle) and a stem (a line attached to the note.) (For more information on half notes and quarter notes, see Lesson 12.)



A large grey rectangular area containing musical notation. On the left, there is a musical staff with a treble clef and four quarter notes. On the right, there is a musical staff with a treble clef and four quarter notes. A watermark 'http://www.sheetmu' is visible in the bottom right corner of the grey area.