

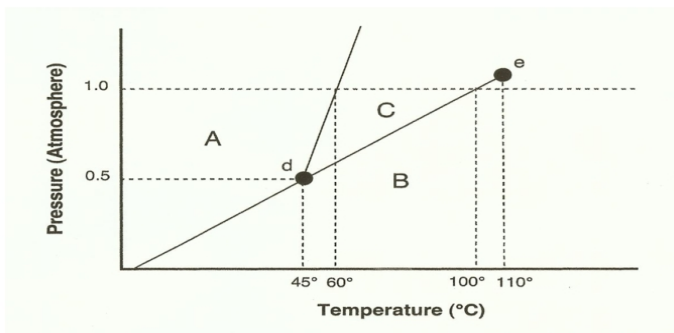
Name \_\_\_\_\_

Due Date \_\_\_\_\_

**PHASE DIAGRAM WORKSHEET**  
(Single Component)

**Part A – Generic Phase Diagram.**

Answer the questions below in relation to the following generic phase diagram.



1. Which section represents the solid phase? \_\_\_\_\_
2. What section represents the liquid phase? \_\_\_\_\_
3. What section represents the gas phase? \_\_\_\_\_
4. What letter represents the triple point? \_\_\_\_\_ In your own words, what is the definition of a triple point?
5. What is this substance's normal melting point, at 1 atmosphere of pressure? \_\_\_\_\_
6. What is this substance's normal boiling point, at 1 atmosphere of pressure? \_\_\_\_\_
7. Above what temperature is it impossible to liquefy this substance, no matter what the pressure?