

NAME: \_\_\_\_\_ DATE : \_\_\_\_\_  
GRADE : \_\_\_\_\_ TEACHER : \_\_\_\_\_

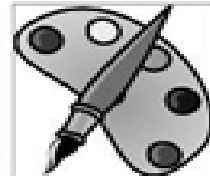
I. COMPLETE THE SCHOOL SUBJECTS WITH THE MISSING WORDS. (6p)

1. E \_ \_ G \_ \_ I \_ \_ H
2. \_ \_ C \_ \_ E \_ \_ C \_ \_
3. P \_ \_ Y \_ \_ I \_ \_ C \_ \_ L \_ \_ E \_ \_ U \_ \_ A \_ \_ I \_ \_ N
4. \_ \_ G \_ \_ P \_ \_ T \_ \_ R \_ \_ C \_ \_ A \_ \_ S
5. M \_ \_ T \_ \_
6. \_ \_ \_ T \_ \_

II. WRITE THE PROPOSITIONS "ON / AT". (3p)

1. \_\_\_\_\_ Monday.
2. \_\_\_\_\_ 7:00 o'clock.
3. \_\_\_\_\_ 8:30.
4. \_\_\_\_\_ Wednesday.
5. \_\_\_\_\_ Friday.
6. \_\_\_\_\_ 4:20

III. WRITE THE NAMES OF SCHOOL SUBJECT ACCORDING TO THE PICTURE. (3p)



IV. ANSWER THE FOLLOWING QUESTIONS. (6p)

1. When do you have English class?  
\_\_\_\_\_
2. When do you have Social Studies class?  
\_\_\_\_\_
3. When do you have Science class?  
\_\_\_\_\_
4. What time do you have Physical Education class?  
\_\_\_\_\_
5. When do you have computer class?  
\_\_\_\_\_
6. When do you have art class?  
\_\_\_\_\_