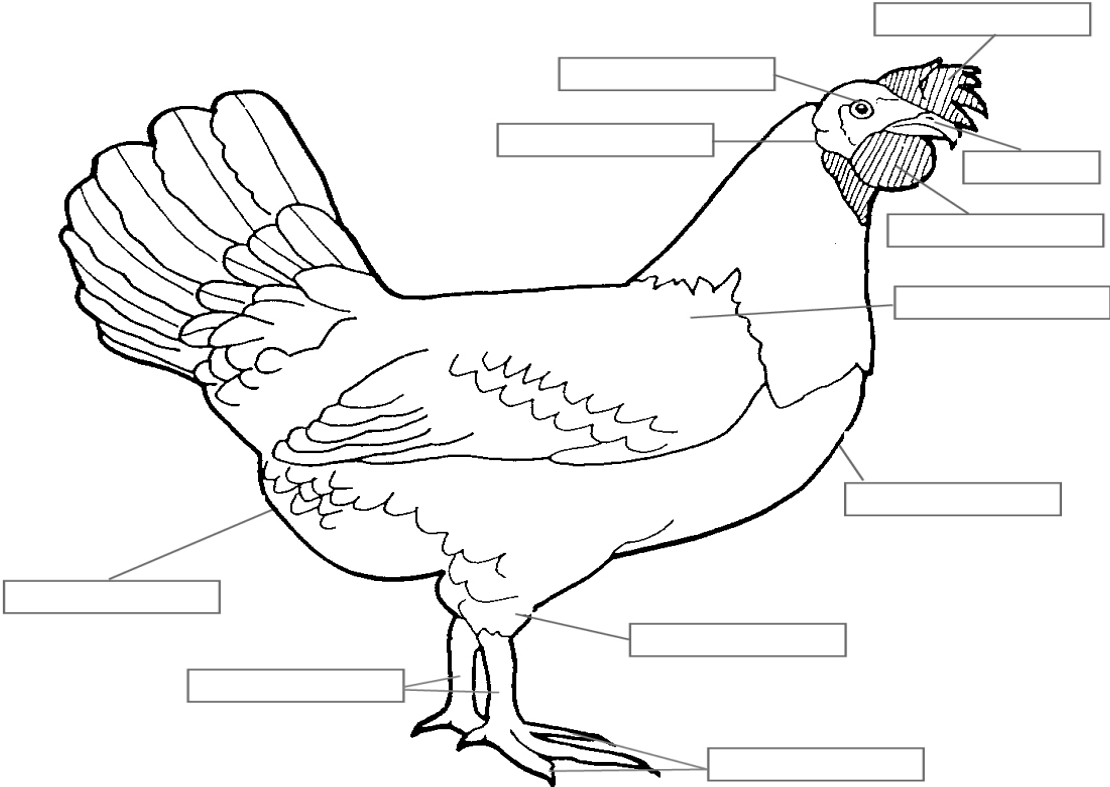


# Parts of a Chicken

Color and label the parts of a chicken.



Use each word only once:

- |      |        |         |          |
|------|--------|---------|----------|
| beak | breast | comb    | ear lobe |
| eye  | hock   | shanks  | shoulder |
| toes | vent   | wattles |          |

This worksheet is a part of the Incubation and Embryology Project (<http://www.urbanext.uiuc.edu/eggs>). University of Illinois Extension, 1999.