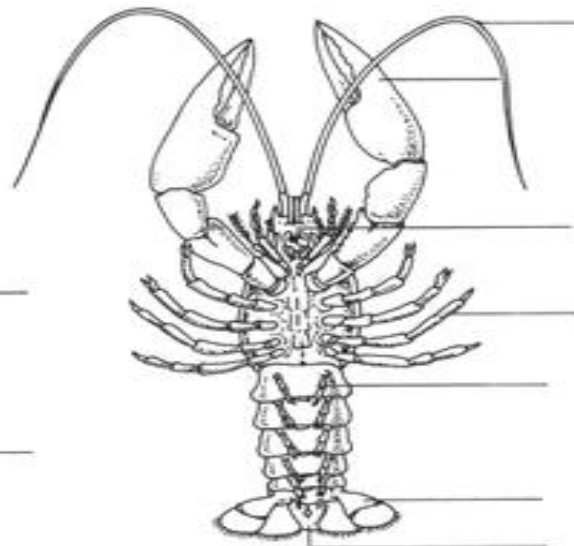
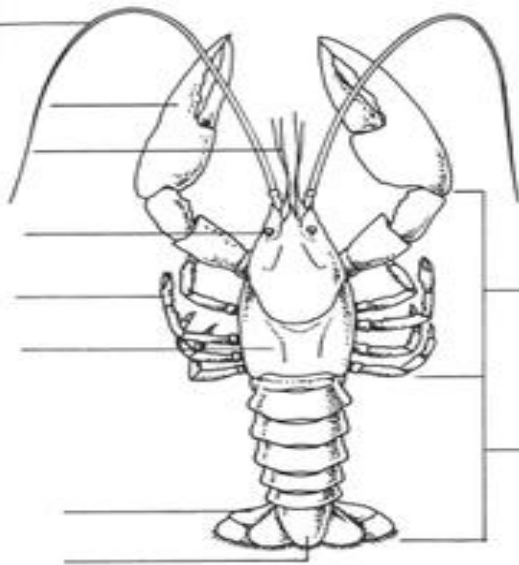


## STRUCTURE OF A CRAYFISH

Name \_\_\_\_\_

Label the following parts of the crayfish on the diagrams of the dorsal and/or ventral views below.

- |                 |                 |                  |
|-----------------|-----------------|------------------|
| a. carapace     | f. antenna      | k. anus          |
| b. compound eye | g. walking legs | l. cephalothorax |
| c. antennule    | h. swimmerets   | m. abdomen       |
| d. mandible     | i. uropod       |                  |
| e. cheliped     | j. telson       |                  |



Fill in the blanks with the correct answers.

Crayfish seize their food with their \_\_\_\_\_. The \_\_\_\_\_ and \_\_\_\_\_ crush and chew the food. The \_\_\_\_\_ are the excretory organs. The \_\_\_\_\_ are used for respiration. The "brain" consists of a pair of \_\_\_\_\_. Two large nerves extend from the \_\_\_\_\_ around the esophagus and join the \_\_\_\_\_ nerve cord.