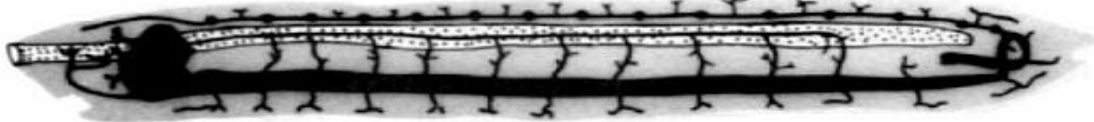


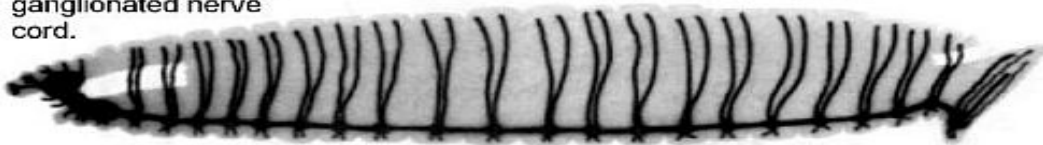
*Ascaris* (round worm). A nematode, with an unsegmented body and dorsal and ventral nerve cord.



*Neuronemertes* (ribbon worm). A nemertean, with cerebral ganglion and one dorsal and two ventral nerve cords. The sheath of the eversible proboscis is stippled.



*Hirudo* (leech). An annelid, prominently segmented, with a cerebral ganglion and a ventral, ganglionated nerve cord.



*Balanoglossus* (acorn worm). A hemichordate, with dorsal and ventral nerve cords and a notochord (stippled) in the proboscis.



*Branchiostoma* (amphioxus). A cephalochordate, with notochord (stippled) and alternating dorsal and ventral roots



Fig. 12. Nervous systems of five worm-like invertebrates. All have the mouth to the left, the anus to the right, and the dorsal surface uppermost. Paired nerves are shown only for the left side of each animal.