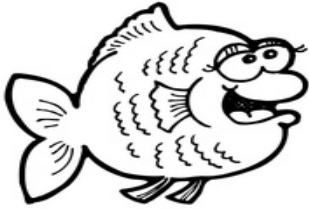


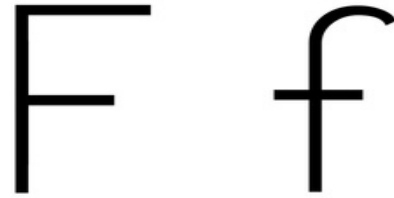
Name _____

Skill: Writing letters of the alphabet-F

Practice writing the letter F.



Fish



Tracing practice lines for the letter F. The first row shows the stroke order for uppercase 'F': stroke 1 is a vertical line down, stroke 2 is a horizontal line across the top, and stroke 3 is a horizontal line across the middle. This is followed by six dashed 'F' characters for tracing. The second row shows the stroke order for lowercase 'f': stroke 1 is a curved line starting from the top, going down and then curving to the right, and stroke 2 is a vertical line down from the middle of the curve. This is followed by seven dashed 'f' characters for tracing. Below these are two more sets of empty handwriting lines (top, dashed middle, bottom) for independent practice.