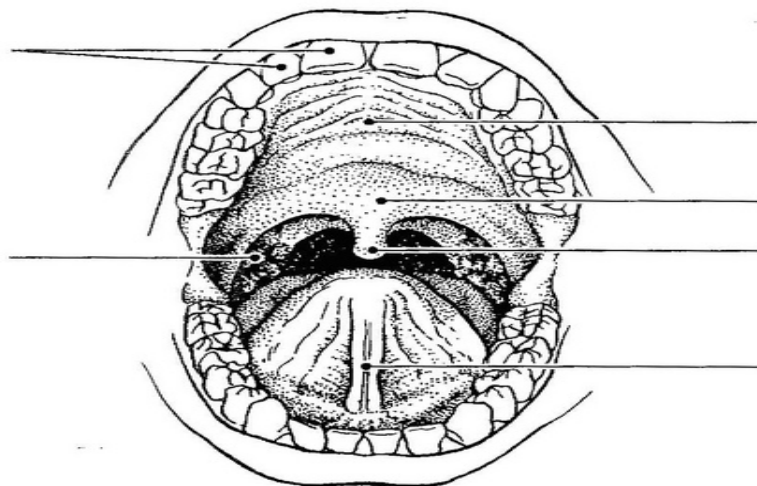


Figure 14-2 illustrates oral cavity structures. First, correctly identify all structures provided with leader lines. Then color the structure that attaches the tongue to the floor of the mouth red; color the portions of the roof of the mouth unsupported by bone blue; color the structures that are essentially masses of lymphatic tissue yellow; and color the structure that contains the bulk of the taste buds pink.



 **Figure 14-2**

Various types of glands secrete substances into the alimentary tube. Match the glands listed in Column B to the functions/locations described in Column A. Place the correct term or letter response in the answer blanks.

Column A

- _____ 1. Produce an enzyme-poor "juice" containing mucus; found in the submucosa of the small intestine
- _____ 2. Secretion includes amylase, which begins starch digestion in the mouth
- _____ 3. Ducts a variety of enzymes in an alkaline fluid into the duodenum
- _____ 4. Produces bile, which is transported to the duodenum via the bile duct
- _____ 5. Produce hydrochloric acid and pepsinogen

Column B

- A. Gastric glands
- B. Intestinal glands
- C. Liver
- D. Pancreas
- E. Salivary glands