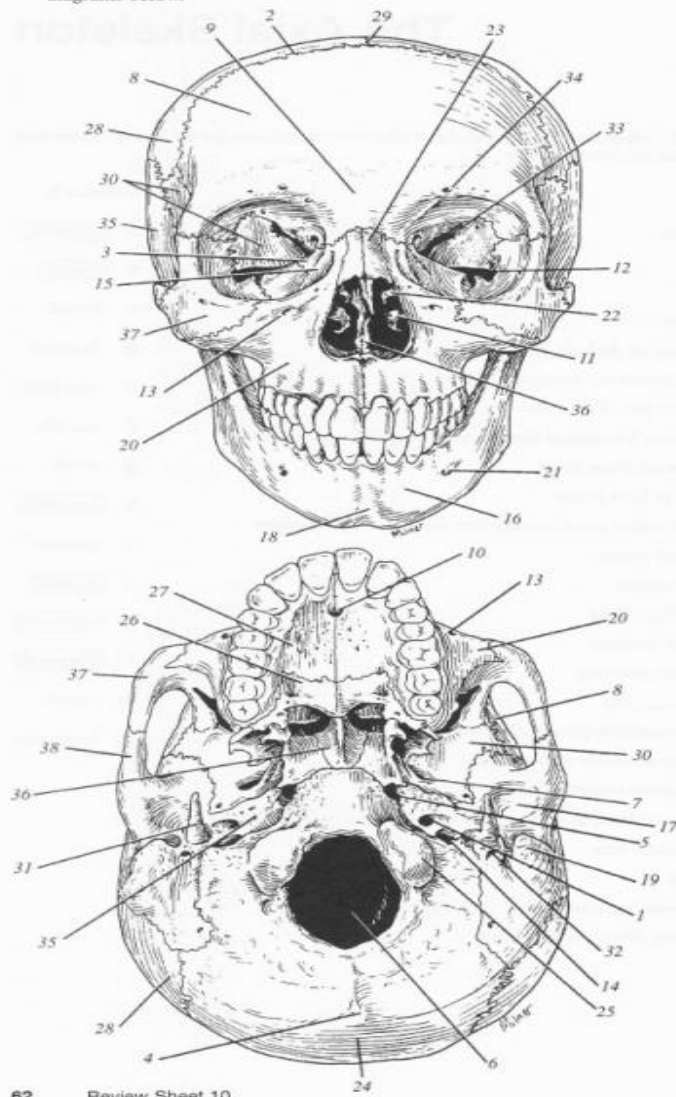


2. Using choices from the numbered key to the right, identify all bones and bone markings provided with leader lines in the two diagrams below.



- Key:*
1. carotid canal
 2. coronal suture
 3. ethmoid bone
 4. external occipital protuberance
 5. foramen lacerum
 6. foramen magnum
 7. foramen ovale
 8. frontal bone
 9. glabella
 10. incisive fossa
 11. inferior nasal concha
 12. inferior orbital fissure
 13. infraorbital foramen
 14. jugular foramen
 15. lacrimal bone
 16. mandible
 17. mandibular fossa
 18. mandibular symphysis
 19. mastoid process
 20. maxilla
 21. mental foramen
 22. middle nasal concha of ethmoid
 23. nasal bone
 24. occipital bone
 25. occipital condyle
 26. palatine bone
 27. palatine process of maxilla
 28. parietal bone
 29. sagittal suture
 30. sphenoid bone
 31. styloid process
 32. stylomastoid foramen
 33. superior orbital fissure
 34. supraorbital foramen
 35. temporal bone
 36. vomer
 37. zygomatic bone
 38. zygomatic process of temporal bone