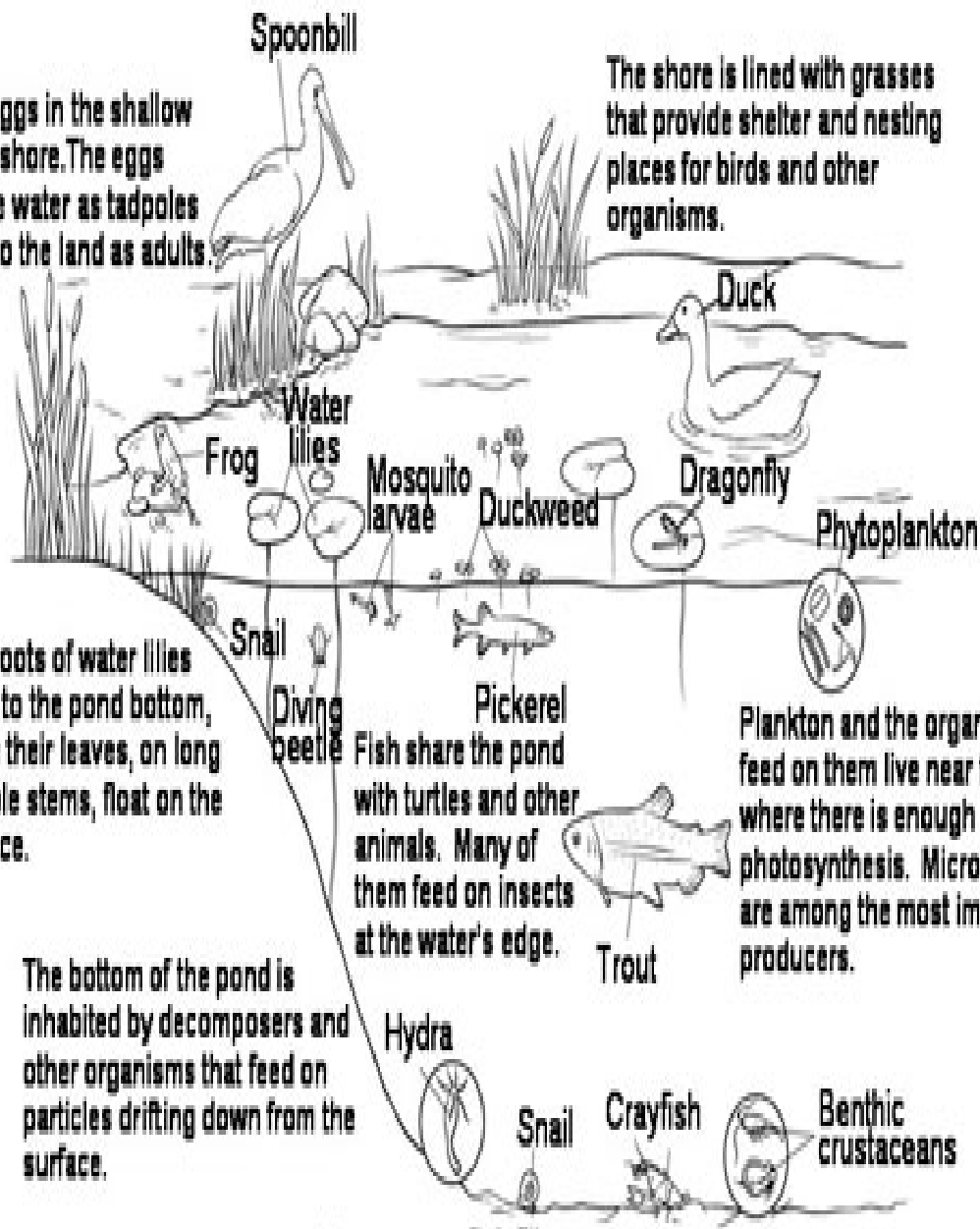


Frogs lay eggs in the shallow water near shore. The eggs hatch in the water as tadpoles and move to the land as adults.

The shore is lined with grasses that provide shelter and nesting places for birds and other organisms.



The roots of water lilies cling to the pond bottom, while their leaves, on long flexible stems, float on the surface.

Fish share the pond with turtles and other animals. Many of them feed on insects at the water's edge.

Plankton and the organisms that feed on them live near the surface where there is enough sunlight for photosynthesis. Microscopic algae are among the most important producers.

The bottom of the pond is inhabited by decomposers and other organisms that feed on particles drifting down from the surface.