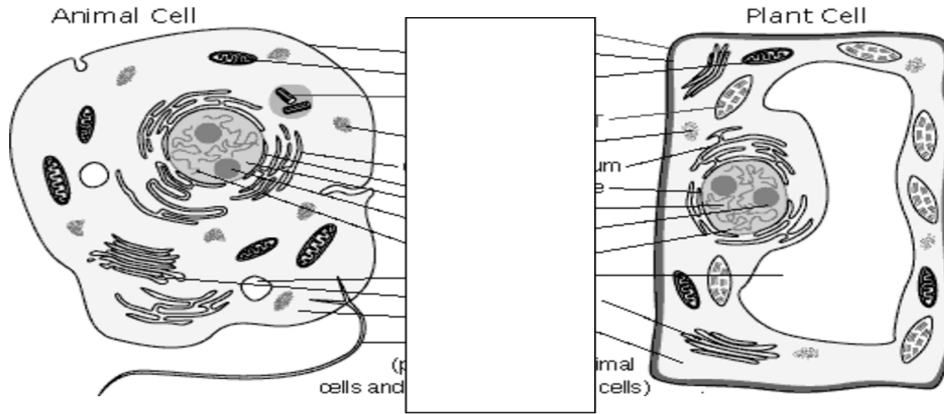


**Animal Cell Coloring**

Name \_\_\_\_\_

Directions: Color each diagram according to the chart below.



- Color the cell membrane blue.
- Color the cell wall red.
- Color chloroplasts green.
- Color mitochondria pink.
- Color the nucleus purple.
- Color the endoplasmic reticulum orange.
- Color the vacuoles yellow.
- Name two organelles you did you NOT color. \_\_\_\_\_

**The fluid mosaic model:** Label the following parts of a cells membrane.

- a. carrier protein (enzyme)
- b. phospholipids
- c. carbohydrate marker

