

Name: \_\_\_\_\_

## Pedigree Analysis

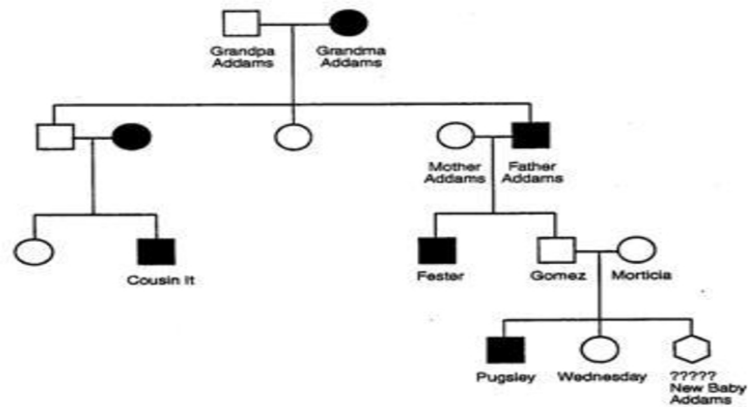
### Part A

Gomez and Morticia Addams are expecting a new baby! They have come to you genetic counselling firm so find out the probability that it will have webbed feet, a trait that runs in the family.

1. Observe the following pedigree. Number the generations and each person on the pedigree.
2. Determine the genotypes of the individuals in the pedigree wherever possible. Write the genotypes on the pedigree.
3. Determine the probability that new baby Addams will have webbed feet.

### The Addams Family Pedigree for Webbed Feet

B = normal feet  
b = webbed feet



### Part B

1. Draw the following pedigree. Albinism is a recessive trait.  
"One couple has a son and daughter with normal pigmentation and a son that is an albino. Another couple has one son and two daughters with normal pigmentation. The daughter from the first couple has three children with the son of the second couple. Their son and one daughter have albinism; their other daughter has normal pigmentation."
2. Label the generations and each individual in the pedigree.
3. Determine the genotypes of as many individuals as possible.