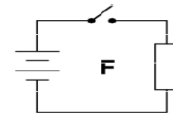
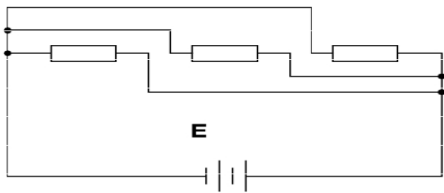
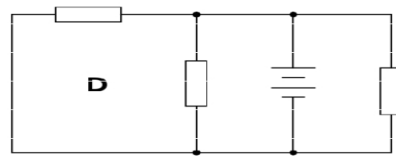
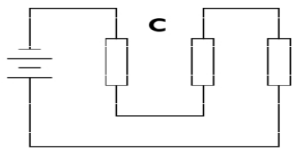
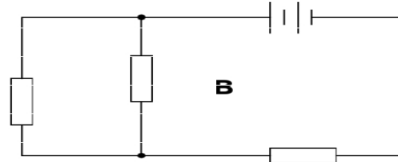
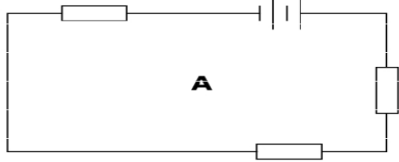


## Series and Parallel Circuits | GCSE P2

1)

Which of the following are parallel circuits, and which are series?



2)

Match the descriptions on the left to the variable on the right, for a **series** circuit.

Same everywhere in the circuit

Shared by all the components

The sum of the resistances

Can be different for each component

Potential difference

Current

Total potential difference

Total resistance