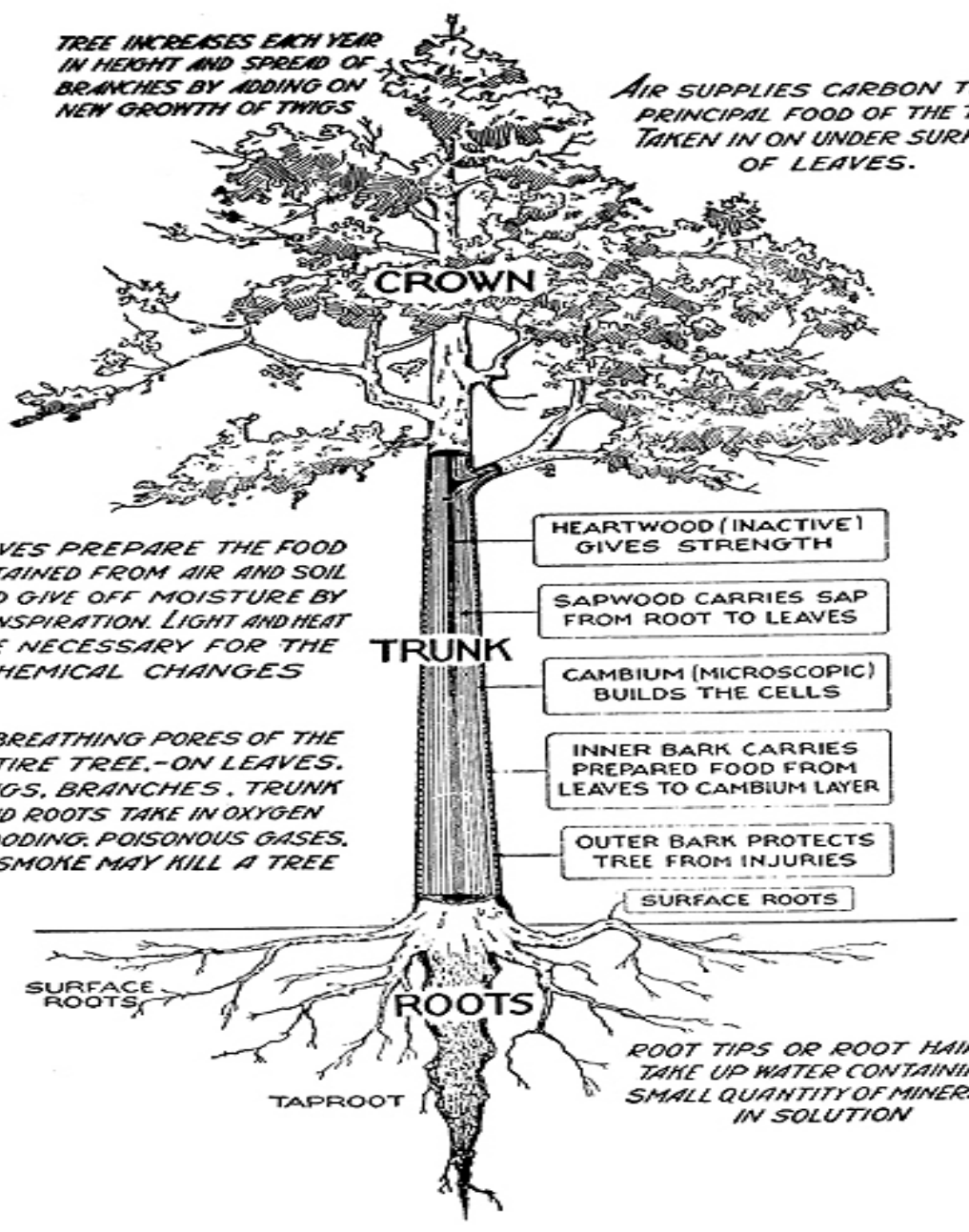


TREE INCREASES EACH YEAR IN HEIGHT AND SPREAD OF BRANCHES BY ADDING ON NEW GROWTH OF TWIGS

AIR SUPPLIES CARBON THE PRINCIPAL FOOD OF THE TREE TAKEN IN ON UNDER SURFACE OF LEAVES.



CROWN

TRUNK

ROOTS

LEAVES PREPARE THE FOOD OBTAINED FROM AIR AND SOIL AND GIVE OFF MOISTURE BY TRANSPIRATION. LIGHT AND HEAT ARE NECESSARY FOR THE CHEMICAL CHANGES

THE BREATHING PORES OF THE ENTIRE TREE, - ON LEAVES, TWIGS, BRANCHES, TRUNK AND ROOTS TAKE IN OXYGEN FLOODING, POISONOUS GASES, OR SMOKE MAY KILL A TREE

HEARTWOOD (INACTIVE) GIVES STRENGTH

SAPWOOD CARRIES SAP FROM ROOT TO LEAVES

CAMBIUM (MICROSCOPIC) BUILDS THE CELLS

INNER BARK CARRIES PREPARED FOOD FROM LEAVES TO CAMBIUM LAYER

OUTER BARK PROTECTS TREE FROM INJURIES

SURFACE ROOTS

SURFACE ROOTS

TAPROOT

ROOT TIPS OR ROOT HAIRS TAKE UP WATER CONTAINING SMALL QUANTITY OF MINERALS IN SOLUTION