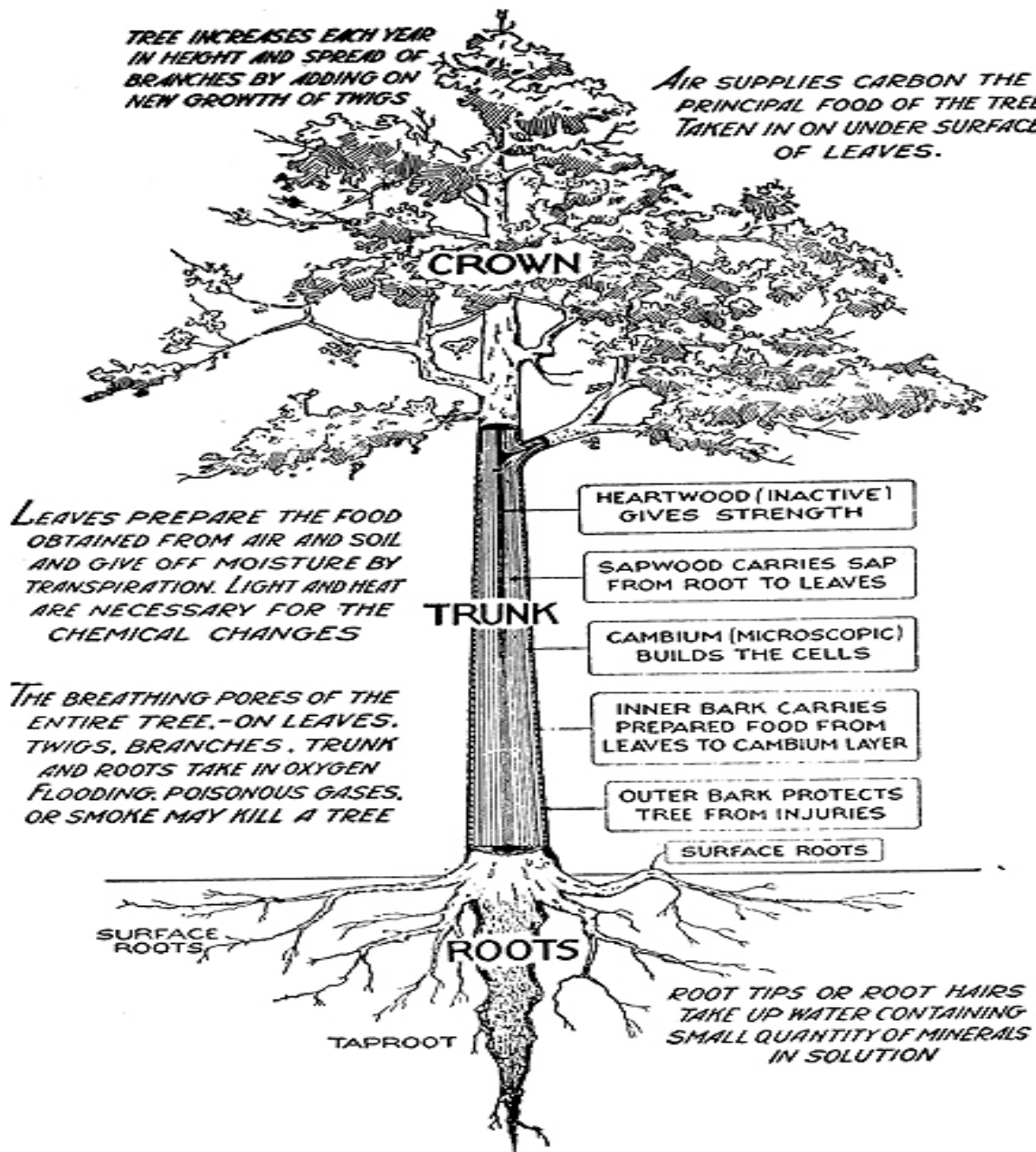


TREE INCREASES EACH YEAR
IN HEIGHT AND SPREAD OF
BRANCHES BY ADDING ON
NEW GROWTH OF TWIGS

AIR SUPPLIES CARBON THE
PRINCIPAL FOOD OF THE TREE
TAKEN IN ON UNDER SURFACE
OF LEAVES.



LEAVES PREPARE THE FOOD
OBTAINED FROM AIR AND SOIL
AND GIVE OFF MOISTURE BY
TRANSPIRATION. LIGHT AND HEAT
ARE NECESSARY FOR THE
CHEMICAL CHANGES

THE BREATHING PORES OF THE
ENTIRE TREE, - ON LEAVES,
TWIGS, BRANCHES, TRUNK
AND ROOTS TAKE IN OXYGEN
FLOODING, POISONOUS GASES,
OR SMOKE MAY KILL A TREE