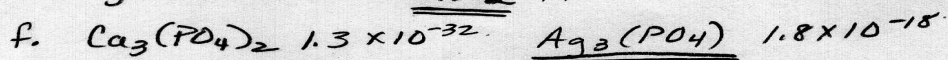
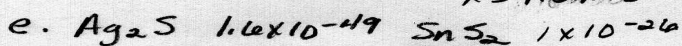
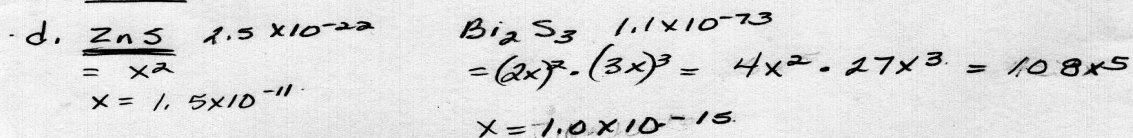
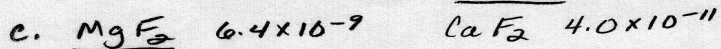
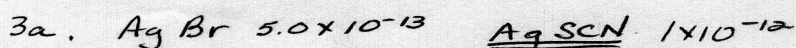
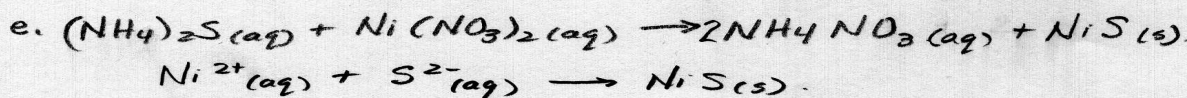
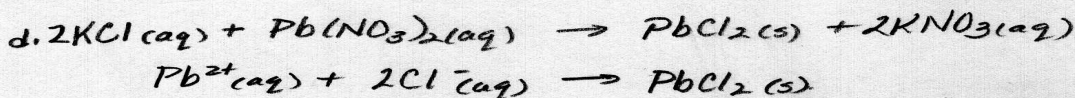
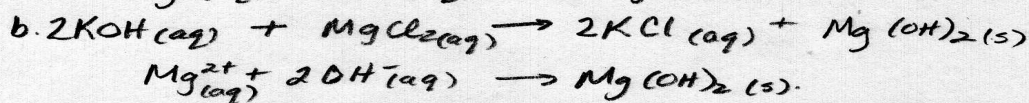
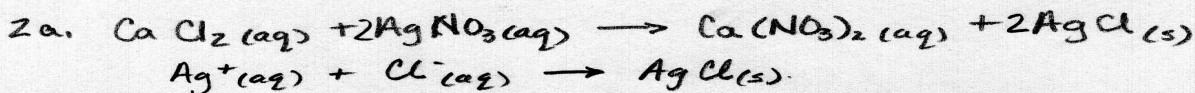


Solubility Equilibria Worksheet.

- 1 a. $(\text{NH}_4)_2\text{S}$ soluble
 b. ZnCO_3 slightly soluble (I)
 c. $\text{Mg}(\text{OH})_2$ slightly soluble (I)
 d. Na_2CO_3 Soluble
 e. FeS slightly soluble (I)
 f. BaSO_4 insoluble
 g. Hg_2Cl_2 insoluble (P114)
 h. CaBr_2 Soluble
 i. CoS slightly soluble (I)



$$= (3x)^3 (2x)^2$$

$$= 27x^3 \cdot 4x^2$$

$$= 108x^5$$

$$x = 4.1 \times 10^{-8}$$

$$= (3x)^3 x$$

$$= 27x^3 \cdot x$$

$$= 27x^4$$

$$x = 1.6 \times 10^{-5}$$