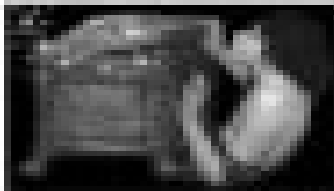
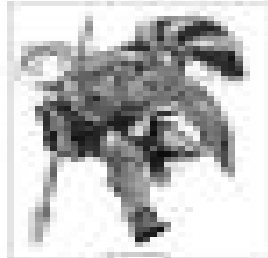


Greek Mythology



1



2



3



4

Q Complete the blanks and match the images with the descriptions.

Mercury - god - messenger - winged - helmet - caduceus - staff - snake - winged - sandals - sandals

Hermes was the messenger chosen by the gods to keep the _____ that contain all the bad things of the world.

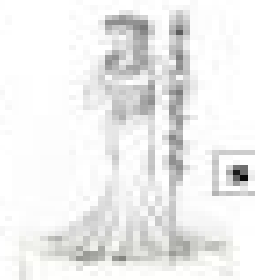
Pan was the _____ of shepherds and flocks, of mountain wilds, hunting and rustic music. He was the half-brother and assistant of Athena and Hermes. He was part _____ and part human.

Hermes is also the messenger of the gods. He was the son of _____ and Athena. He is often winged and wears the _____ on his sandals called winged sandals.

Hermes was the god of _____ His symbols are the _____, the _____ and caduceus.

Pan was the god of the wild, the king of the satyrs, ruler of _____ His symbols are a _____, an _____ and a goat's head.

_____ was the god of music and beauty. His symbols are the _____, the lyre and the dove.



5



6