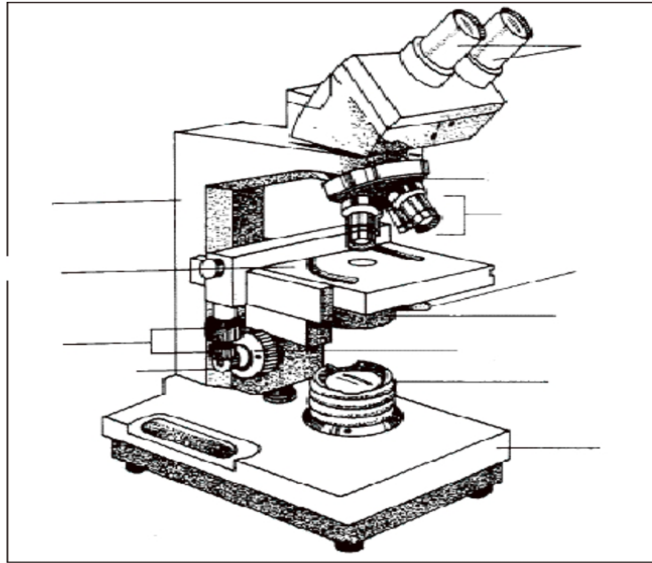


Microscopy, Cells, and Microorganism Worksheet

Microscopes:

1) List the 4 types of microscopes: _____

2) Label these parts of a compound microscope: arm, base, stage, revolving nosepiece, oculars, objective lenses, fine adjustment knob, coarse adjustment knob, light source



Cells

3) What is a cell?

4) What are the two types of cells? _____