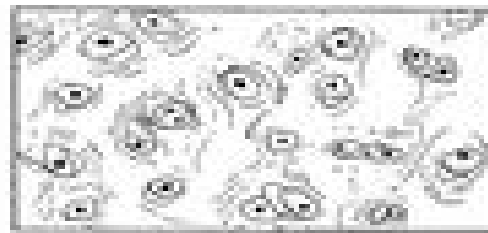




G _____



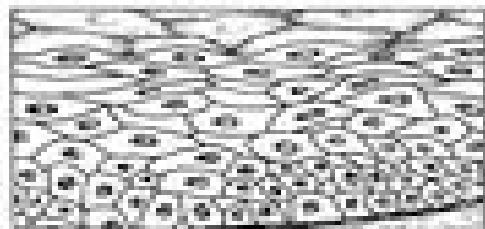
H _____



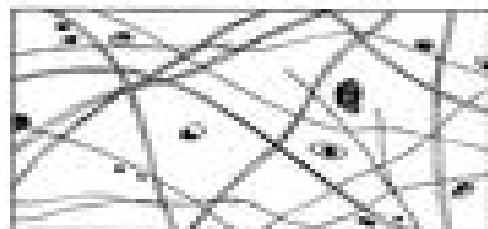
I _____



J _____



K _____



L _____

Using the key above, correctly identify the following major tissue types. Enter the appropriate answer in the answer in the answer blanks.

A. Connective

B. Epithelium

C. Muscle

D. Nervous

- 1. _____ Forms membranes
- 2. _____ Allows for movement of fluids and for organ movements within the body.
- 3. _____ Uses electrochemical signals to carry out its function.
- 4. _____ Supports and surrounds body organs
- 5. _____ Cells of this tissue may absorb and/or secrete substances.
- 6. _____ Basis of the major controlling system of the body.

- 7. _____ Its cells cluster to form buds.
- 8. _____ Forms structures and mucous glands.
- 9. _____ Supports and sustains body organs.
- 10. _____ Allows you to smile, grasp, and create, etc., and there's a ball.
- 11. _____ Forms the brain.
- 12. _____ Forms the brain and spinal cord.