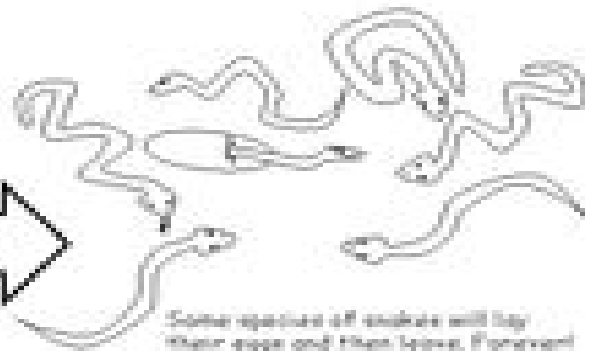
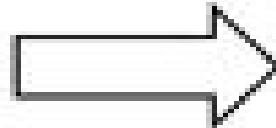


Name: \_\_\_\_\_

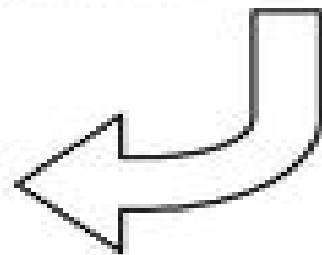
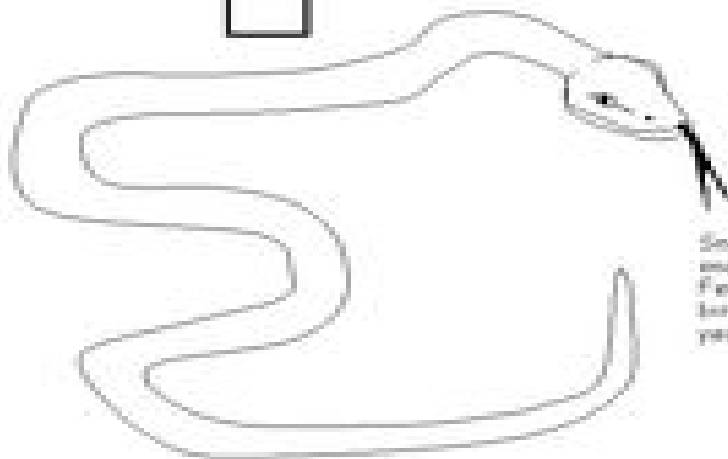
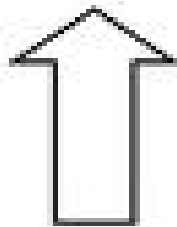
## Life Cycle of an Egg-laying Snake

Egg-laying snakes find a safe place to lay their eggs like a hollow log or a hole in the ground. Snake eggs are kind of leathery and soft not hard-shelled like chicken or bird eggs.



Some species of snakes will lay their eggs and then leave. However! When the eggs hatch, baby snakes are off and moving, or rather, slithering. And they know just what to do to survive!

When the mother snake does stay to care for the eggs until they hatch, it is called brooding. Cobras & Pythons brood.



Snake babies look just like adult snakes only shorter and thinner. Female snakes reproduce, or give birth, once a year or once every 3 years.