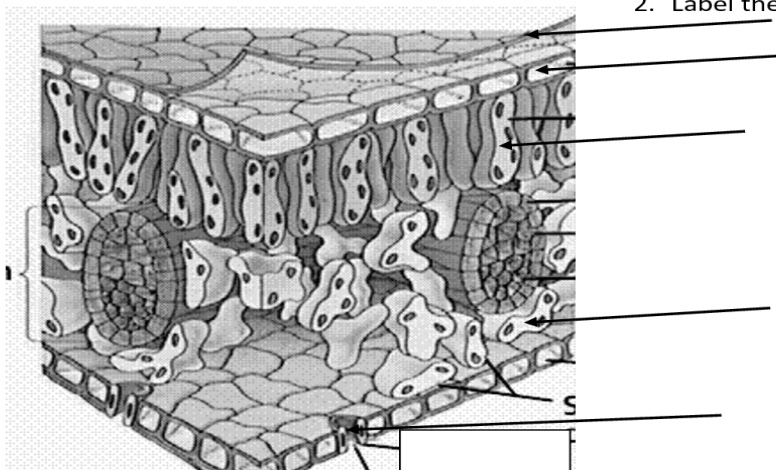


1. True/False All photosynthesis is carried out by plants.

2. Label the figure below:



3. The energy for photosynthesis comes mostly from various ___ wavelengths.

- a. Red and green
- b. Blue and red
- c. Blue and yellow
- d. Green and blue

4. Matching:

- | | |
|---|-------------------------|
| a. Stacks of thylakoid-enclosed sacs | ___ thylakoid memb. |
| b. Organelles in which photosynthesis takes place | ___ mesophyll cells |
| c. Cells containing the highest density of chloroplasts | ___ grana |
| d. Waxy outer layer of leaves | ___ chloroplasts |
| e. Cells that form the outer layer of veins | ___ stomata |
| f. Membranes containing chlorophyll & photosystems | ___ bundle sheath cells |
| g. Pores that permit gas exchange to take place | ___ cuticle |

5. True/False Stomata are permanently open to permit gas exchange to place continually.