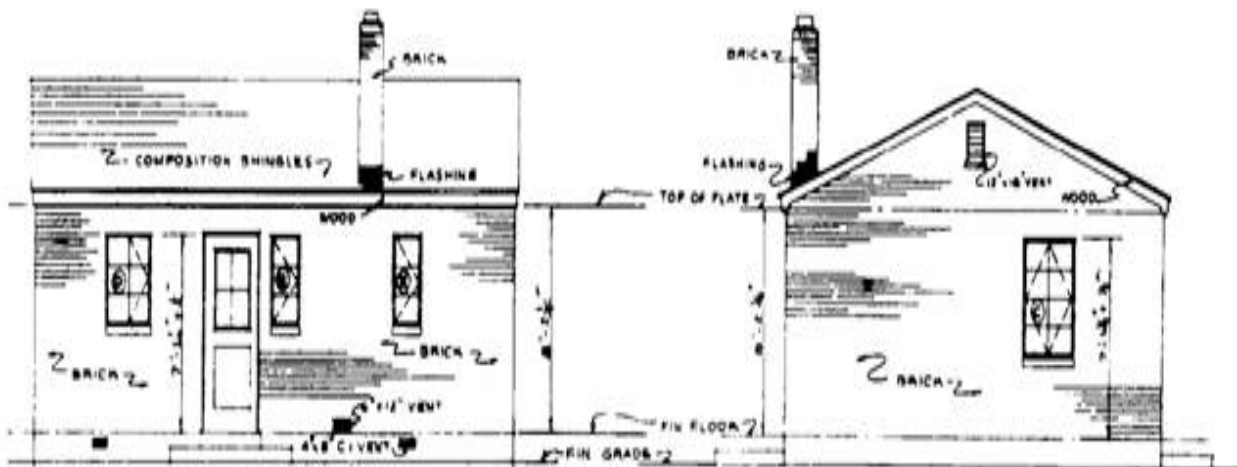


FRONT ELEVATION  
SCALE:  $\frac{1}{4}'' = 1'-0''$

RIGHT SIDE ELEVATION  
SCALE:  $\frac{1}{4}'' = 1'-0''$



REAR ELEVATION  
SCALE:  $\frac{1}{4}'' = 1'-0''$

LEFT SIDE ELEVATION  
SCALE:  $\frac{1}{4}'' = 1'-0''$