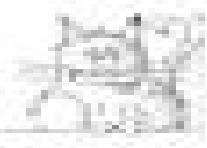




PROCESSES INVOLVED IN THE FORMATION OF
LIFE: EVERYTHING IS AN INTERDEPENDENT
SYSTEM AND EACH PART OF IT IS
ESSENTIAL TO THE WHOLE

ABRACADABRA!



PERSON IS LIFE



PERSON IS GREEN



PERSON IS BLACK



PERSON IS YELLOW



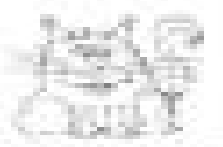
PERSON IS BLUE



PERSON IS RED



PERSON IS PURPLE



PERSON IS BROWN



PERSON IS GREY