

Name \_\_\_\_\_ Identifying animal adaptations

## Awesome Adaptations

Animals have special features, or adaptations, to help them find food, shelter, and protection.

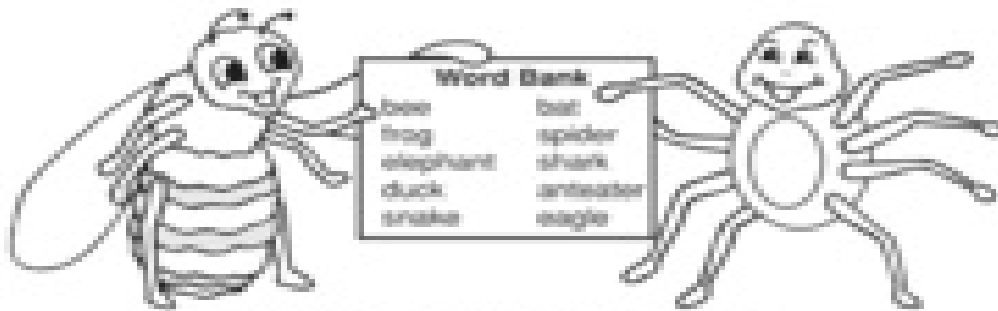
Read each sentence.

Write the matching word on the line.

Use the Word Bank.

**Bonus Box:** Choose an animal not in the Word Bank. On the back of this sheet, describe how this animal finds food, shelter, and protection.

1. An \_\_\_\_\_ has a long snout for reaching into anthills.
2. A \_\_\_\_\_ has webbed feet for swimming and diving.
3. A \_\_\_\_\_ spins a web to trap insects.
4. A \_\_\_\_\_ can stretch its jaw to swallow its prey whole.
5. A \_\_\_\_\_ has many rows of replaceable teeth to catch and eat its prey.
6. A \_\_\_\_\_ has hairy legs that collect and transport pollen.
7. A \_\_\_\_\_ uses high-pitched sounds to find insects.
8. An \_\_\_\_\_ has sharp talons to kill and carry prey while flying.
9. A \_\_\_\_\_ has a sticky tongue to catch insects.
10. An \_\_\_\_\_ has a long trunk for reaching tree leaves.



©The McGraw-Hill Companies, Inc. www.mh.com/edtech/0000000000 February/March 2008