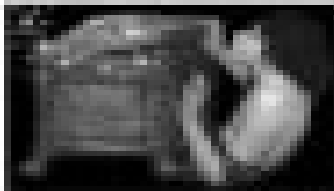
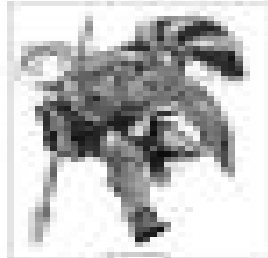


Greek Mythology



1



2



3



4

Q Complete the blanks and match the images with the descriptions.

*Mer - sea - Eros - love - god - Hermes - messenger - Hermes - messenger - wings - Aphrodite - shell - eagle - sword

Hermes was the messenger chosen by the gods to keep the _____ that contain all the bad things of the world.

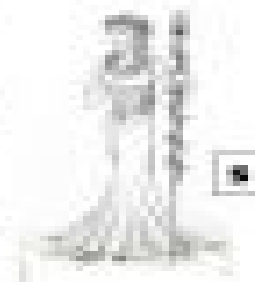
Posidon was the _____ of earthquakes and floods, of mountains with, hunting and water animals. He was the father and protector of Atlantis, Poseidon for his people. He was part _____ and part human.

Aphrodite is the goddess of love and beauty. She was the sister of _____ and _____ She is married with the handsome god _____ the son of Zeus and Hera.

Eros was the god of _____ His symbols are the _____ the _____ and feathers.

Zeus was the god of the sky, the king of the gods, ruler of _____ His symbols are a _____ the _____ and a bolt of lightning.

_____ was the goddess of music and beauty. Her symbols are the _____ the apple and the dove.



5



6