

gills underneath cap
(some fungi have pores or downward-projecting, spine-like teeth beneath the cap)

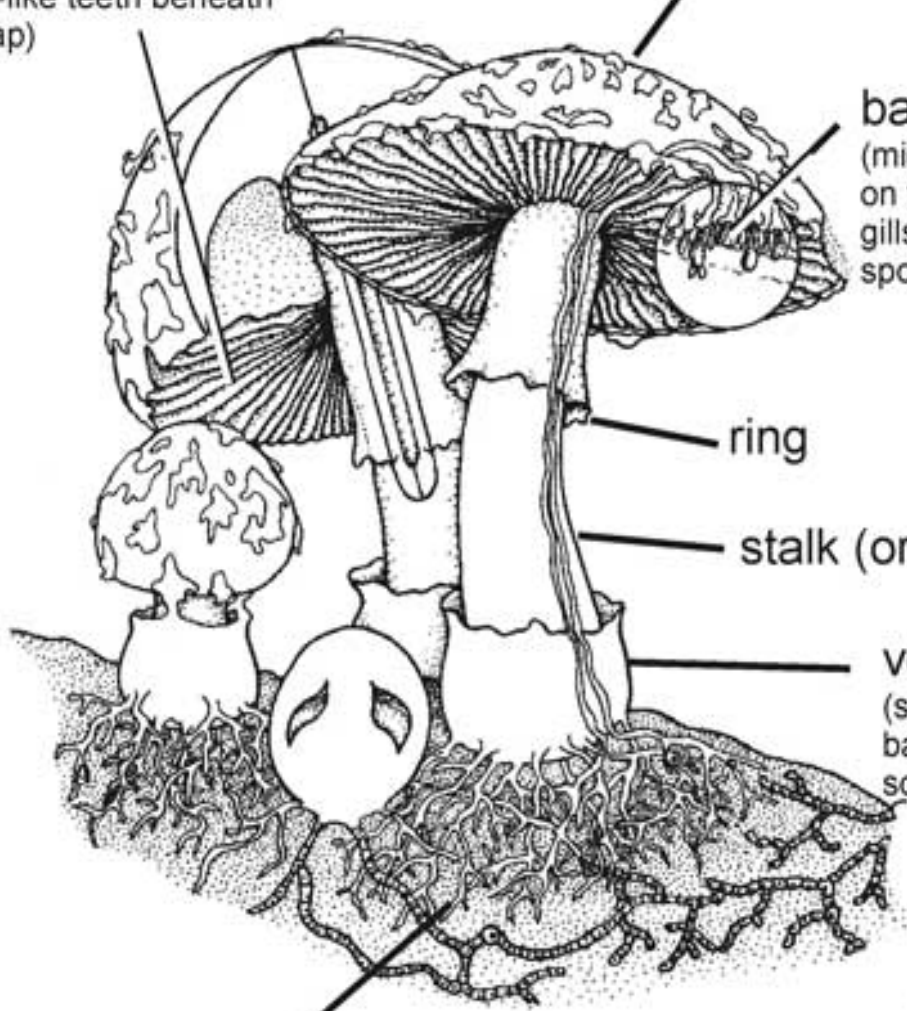
cap (or pileus)

basidia
(microscopic cells on the sides of the gills, on which the spores form)

ring

stalk (or stipe)

volva
(sack-like layer at the base of the stalk of some fungi)



Livingstone ©BIODIDAC

microscopic mycelium within the substrate on which the fungus is growing