

Beef Project meeting

Saturday October 6th 10:00-noon

Jackson County Fair Grounds, beef barn

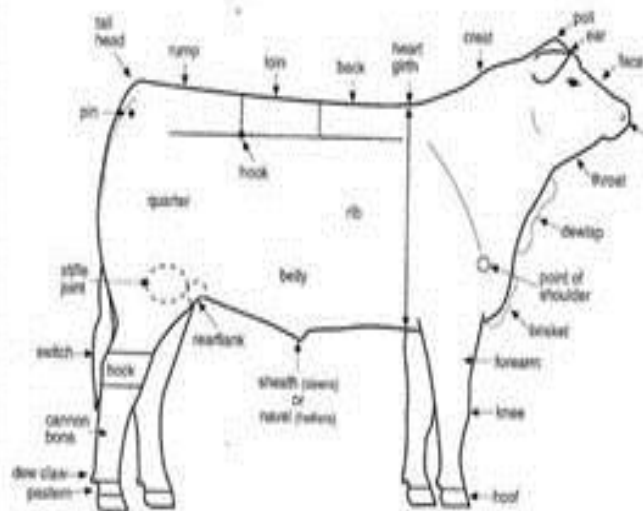
There are several ways to start your beef project...

One is to select a heifer and/or steer from your parent's or your own herd. An other is to purchase an animal from an established beef producer. Either way,

selection of a project animal should be done carefully, with consideration given to breed, size and quality.

This workshop will cover information needed to select good quality calves - ideal breeding heifer and market steer, structural correctness, and measuring frame score.

For more information, contact the Jackson County UW-Extension office 284-4257



UW-Extension provides equal opportunities in employment and programming, including Title IX and ADA. To ensure equal access, please make requests for reasonable accommodations as soon as possible prior to the scheduled program service or activity.