

**EXERCISE 8**

Name \_\_\_\_\_  
Section \_\_\_\_\_

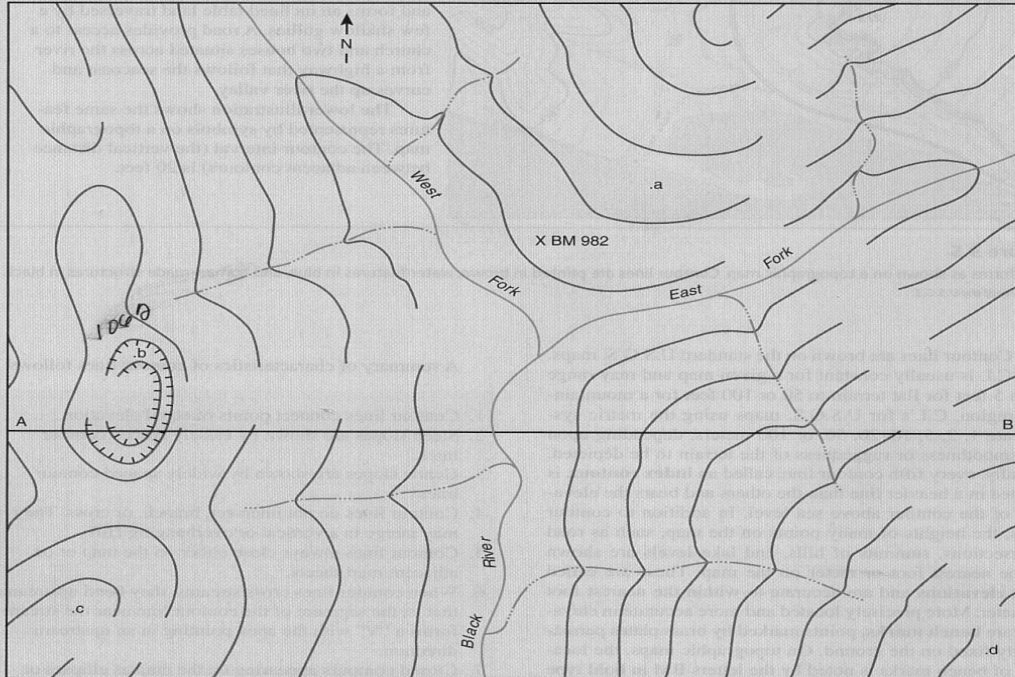
Date \_\_\_\_\_

**Problems on Contour Lines**

1. Study the map in Figure 3.6. Note the elevation of the bench mark (BM 982). This notation means that the point marked X is 982 feet above sea level. Use a brown pencil to label each contour line with its proper elevation. Determine the approximate elevation of points labeled a, b, c, and d. (Note that

the C.I. is 20 feet.) The elevation of each contour line should be written in the space between the broken contour lines (see fig. 3.5 for example).

**Retain figure 3.6 for use in a later exercise.**



Contour Interval 20 Feet

Topographic Map

1 inch = 2,000 Feet

**Figure 3.6**

Topographic map and topographic profile to be used in connection with Exercise 8, question 1; Exercise 9, question 6; and Exercise 10, question 1.

X 30

South