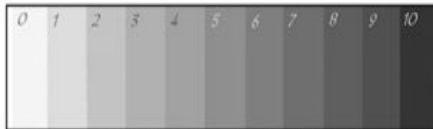


# The Illusion of Space: Shading

We use LINE to create VALUE.

VALUE is... \_\_\_\_\_

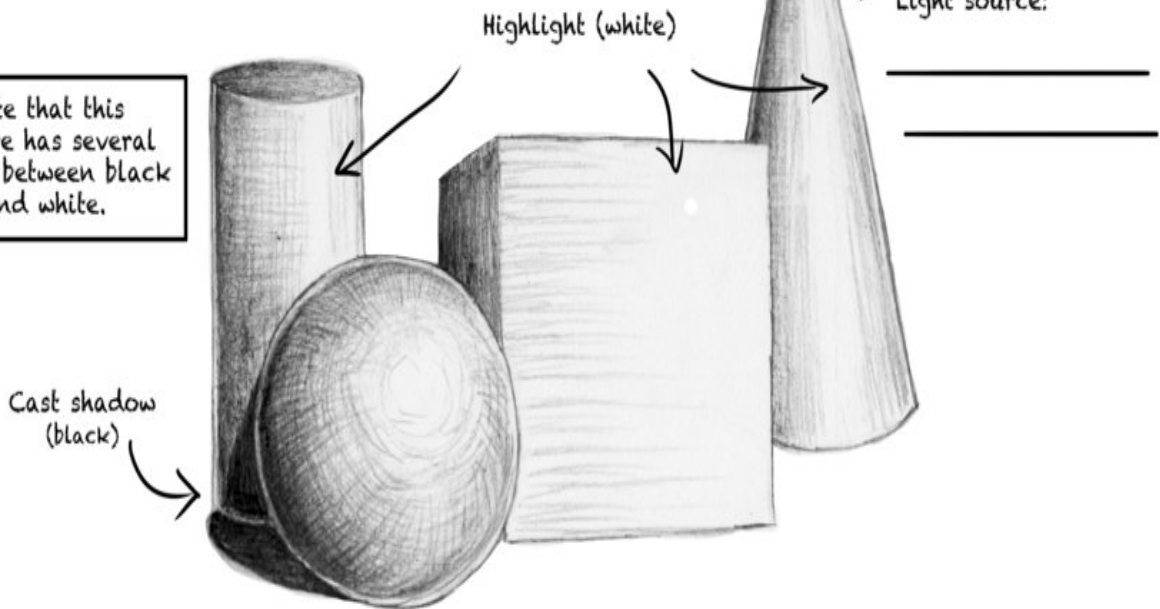


This is a value scale, showing 8 degrees of gray between white and black.

When we shade, we:

- \* go light to dark
- \* follow the contour of the object
- \* vary the pressure on our pencil

Note that this picture has several values between black and white.



What is the difference between SHAPE and FORM?

---