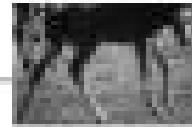


## Simile Practice

Figurative language includes special forms that writers use to help readers make a strong connection to their words. A **simile** is one kind of figurative language. It makes a comparison of two unlike things using the words "like" or "as".

Write similes about the subjects listed below. Remember to make a connection using "like" or "as".

1. The old chair  
 \_\_\_\_\_ The old chair was as shaky as a newborn horse trying to stand up.



2. My favorite teacher  
 \_\_\_\_\_

3. The painting  
 \_\_\_\_\_

4. The waterfall  
 \_\_\_\_\_

5. The parrot  
 \_\_\_\_\_

6. The leafy shade tree  
 \_\_\_\_\_

7. My uncle's head  
 \_\_\_\_\_

8. The first day of school  
 \_\_\_\_\_

9. The mud outside  
 \_\_\_\_\_

10. The lost dog  
 \_\_\_\_\_