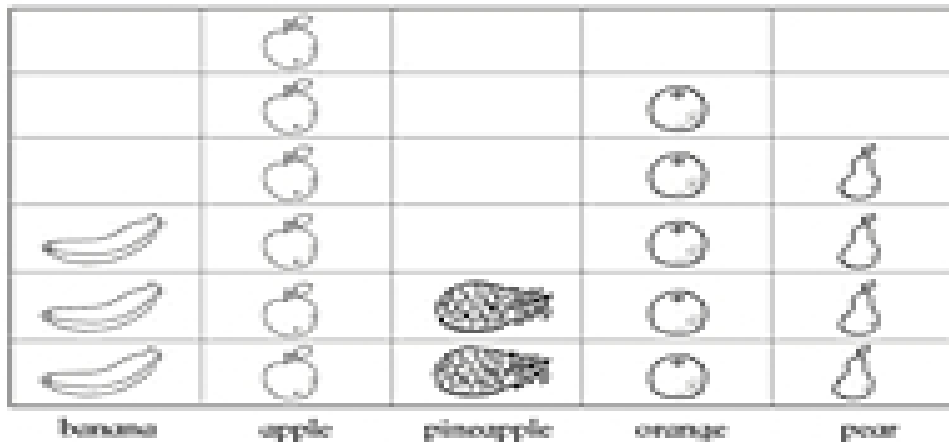


Bar graphs



Fruit



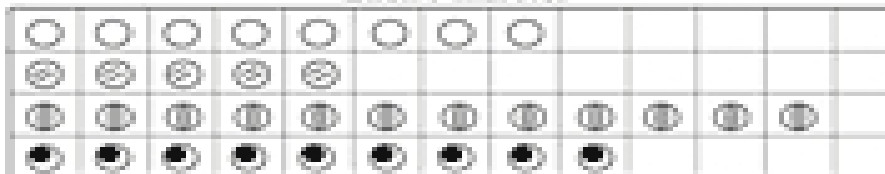
How many pears are there? How many bananas are there?

The graph shows 6 . The graph shows 2 .

How many more oranges are there than bananas?

How many apples and pears are there altogether?

Ellen's marbles



How many  does Ellen have? How many  does Ellen have?

How many fewer  than  does she have?

How many  and  does she have altogether?