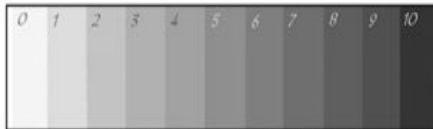


The Illusion of Space: Shading

We use LINE to create VALUE.

VALUE is... _____

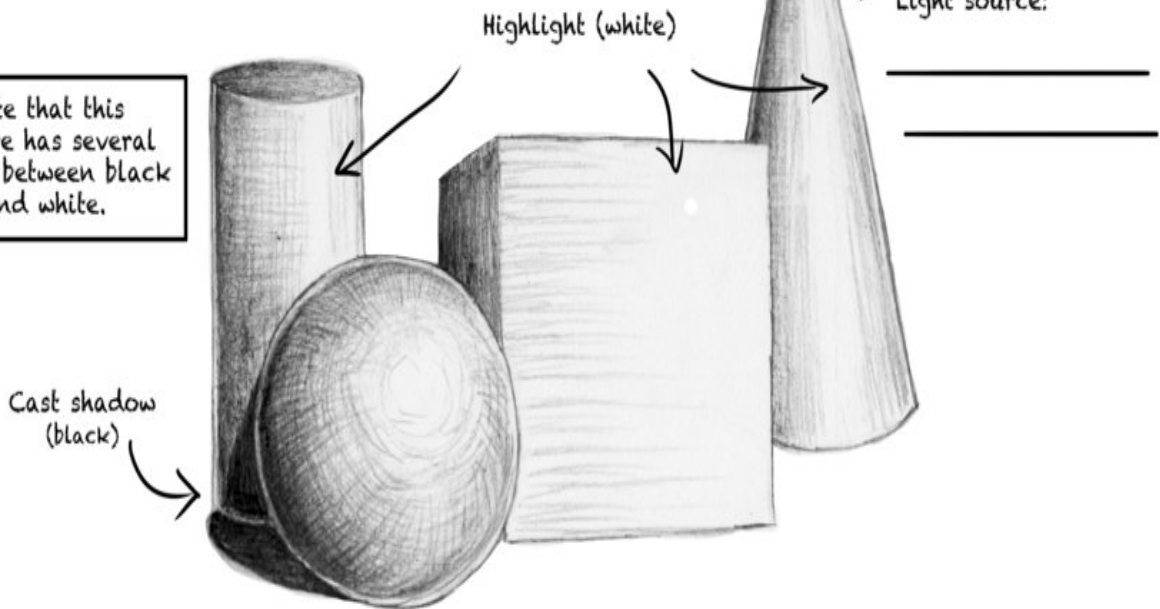


This is a value scale, showing 8 degrees of gray between white and black.

When we shade, we:

- * go light to dark
- * follow the contour of the object
- * vary the pressure on our pencil

Note that this picture has several values between black and white.



What is the difference between SHAPE and FORM?
