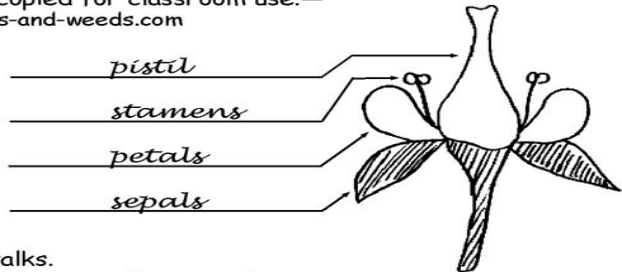


Patterns in Plants Answer Sheet

Shanley's Quest: A Botany Adventure for Kids Ages 9 to 99

—This page may be photocopied for classroom use.—
www.wildflowers-and-weeds.com

Part I: Start from the outside of the flower and label the flower parts.



Part II: Write "monocot" or "dicot" and the family name for each of the flowers below. Write the letter for the correct pattern for identification from the following list.

Families

- Mint
- Parsley
- Mustard
- Pea
- Lily
- Grass
- Rose
- Aster

Patterns for Identification

- A. Compound umbels. Hollow stalks.
- B. Square stems and opposite leaves, usually aromatic.
- C. Weedy annuals with 4 petals and 6 stamens, 4 tall, 2 short.
- D. Irregular flowers with "banner, wings, and keel." Pea-like pods.
- E. Wind pollinated flowers without petals. Leaves with parallel veins.
- F. Composite flowerheads with ray flowers, disc flowers, and pitted discs.
- G. Flower parts in threes. Sepals and petals identical in size and color.
- H. 5-petaled flowers with numerous stamens and often fleshy fruits.



Family: Lily
Pattern: G
M or D: monocot



Family: Aster
Pattern: F
M or D: dicot



Family: Grass
Pattern: E
M or D: monocot



Family: Mustard
Pattern: C
M or D: dicot



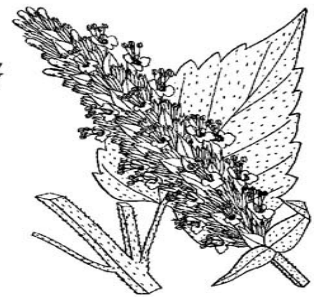
Family: Pea
Pattern: D
M or D: dicot



Family: Parsley
Pattern: A
M or D: dicot



Family: Rose
Pattern: H
M or D: dicot



Family: Mint
Pattern: B
M or D: dicot