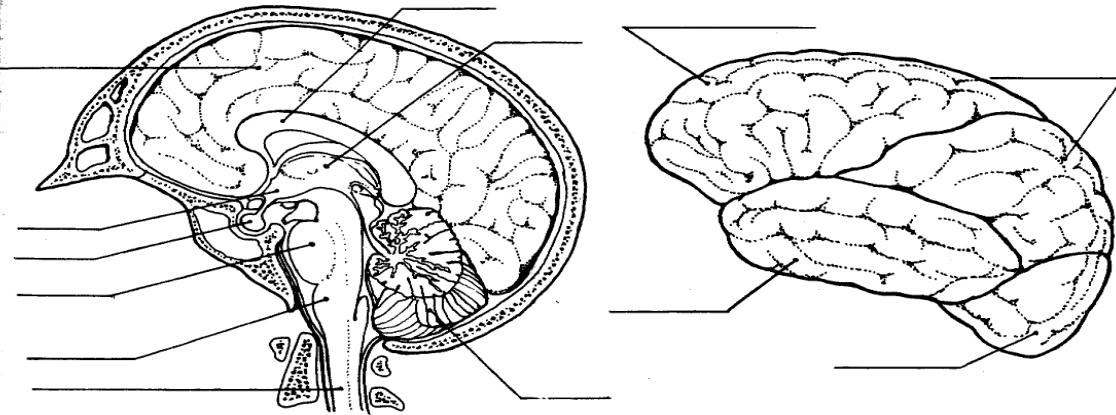


## STRUCTURE OF THE BRAIN

Name \_\_\_\_\_

Label the correct parts of the brain and spinal cord on the diagram at the left below. Give the purpose/function of each part.

- cerebellum \_\_\_\_\_
- medulla oblongata \_\_\_\_\_
- thalamus \_\_\_\_\_
- hypothalamus \_\_\_\_\_
- corpus callosum \_\_\_\_\_
- pons \_\_\_\_\_
- spinal cord \_\_\_\_\_
- cerebrum \_\_\_\_\_
- pituitary gland \_\_\_\_\_



### Lobes of the Cerebrum

The diagram to the right above shows the four major lobes of each hemisphere of the cerebrum: frontal, parietal, occipital and temporal. Label each lobe. Then, fill in the blanks below with the correct answers.

The \_\_\_\_\_ lobes control some body movements, reasoning, judgment and emotions. The sense of vision is located in the \_\_\_\_\_ lobe. The sense of hearing is interpreted in the \_\_\_\_\_ lobes. The \_\_\_\_\_ lobes interpret sensations such as pain, pressure, touch, hot and cold.