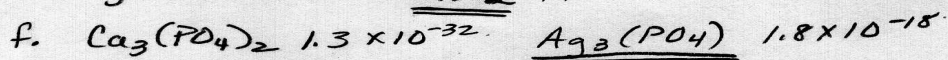
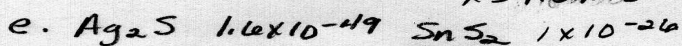
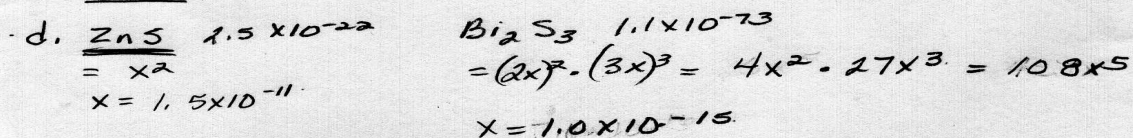
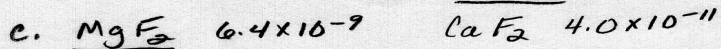
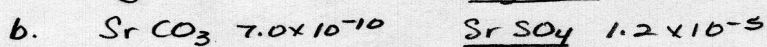
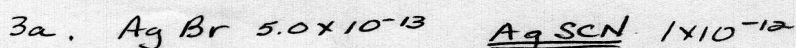
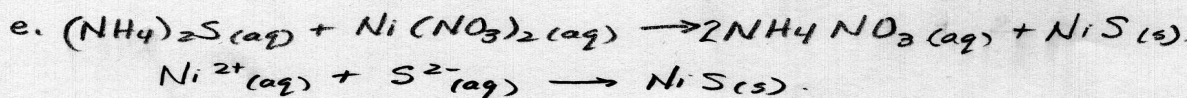
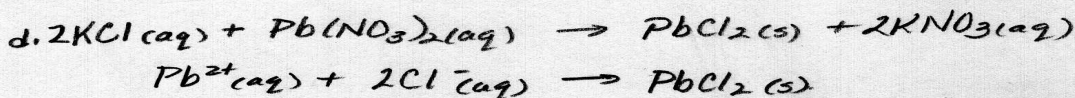
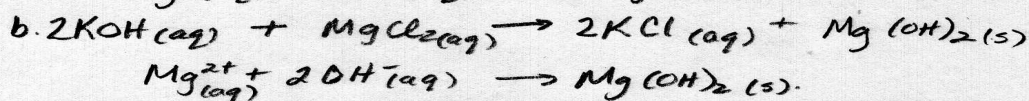
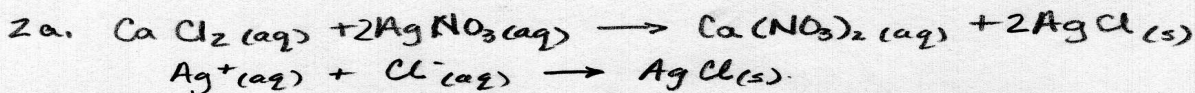


## Solubility Equilibria Worksheet.

- 1 a.  $(\text{NH}_4)_2\text{S}$  soluble  
 b.  $\text{ZnCO}_3$  slightly soluble (I)  
 c.  $\text{Mg}(\text{OH})_2$  slightly soluble (I)  
 d.  $\text{Na}_2\text{CO}_3$  Soluble  
 e.  $\text{FeS}$  slightly soluble (I)  
 f.  $\text{BaSO}_4$  insoluble  
 g.  $\text{Hg}_2\text{Cl}_2$  insoluble (P114)  
 h.  $\text{CaBr}_2$  Soluble  
 i.  $\text{CoS}$  slightly soluble (I)



$$= (3x)^3 (2x)^2$$

$$= 27x^3 \cdot 4x^2$$

$$= 108x^5$$

$$x = 4.1 \times 10^{-8}$$

$$= (3x)^3 x$$

$$= 27x^3 \cdot x$$

$$= 27x^4$$

$$x = 1.6 \times 10^{-5}$$