

Name _____ Identifying animal adaptations

Awesome Adaptations

Animals have special features, or adaptations, to help them find food, shelter, and protection.

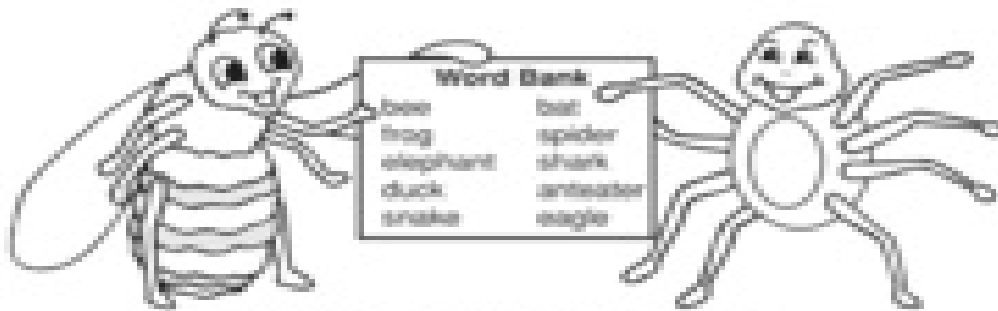
Read each sentence.

Write the matching word on the line.

Use the Word Bank.

Bonus Box: Choose an animal not in the Word Bank. On the back of this sheet, describe how this animal finds food, shelter, and protection.

1. An _____ has a long snout for reaching into anthills.
2. A _____ has webbed feet for swimming and diving.
3. A _____ spins a web to trap insects.
4. A _____ can stretch its jaw to swallow its prey whole.
5. A _____ has many rows of replaceable teeth to catch and eat its prey.
6. A _____ has hairy legs that collect and transport pollen.
7. A _____ uses high-pitched sounds to find insects.
8. An _____ has sharp talons to kill and carry prey while flying.
9. A _____ has a sticky tongue to catch insects.
10. An _____ has a long trunk for reaching tree leaves.



©The McGraw-Hill Companies, Inc. www.mh.com/education/0070700000 February/March 2008