

Painted Lady Butterfly Life Cycle

Pale green egg with
12-14 longitudinal ridges



Egg

The size of a
pin head

Black to purple with yellow-green
stripes and long spines

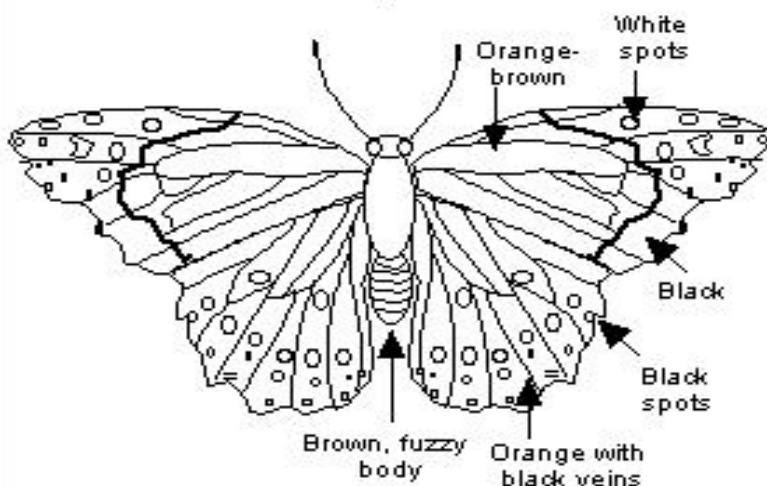


Larva = Caterpillar

The caterpillar eats and
grows a tremendous amount.

The adult female
lays an egg that
was fertilized by
the male.

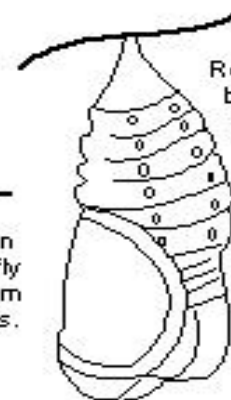
The caterpillar
attaches itself
upside-down to
a twig or leaf
and forms a hard
outer shell.



Adult = Butterfly

Adults live for only a short time. They
cannot eat; they only drink through
their straw-like spiral proboscis.
They will fly, mate, and reproduce.

A fully-grown
adult butterfly
emerges from
the chrysalis.



Reddish
brown
pupa

Pupa = Chrysalis

Inside the pupa, the
caterpillar changes
into a butterfly.

Copyright ©ZoomSchool.com