

1. Choose the correct alternative(s). In each sentence there is at least one false alternative.

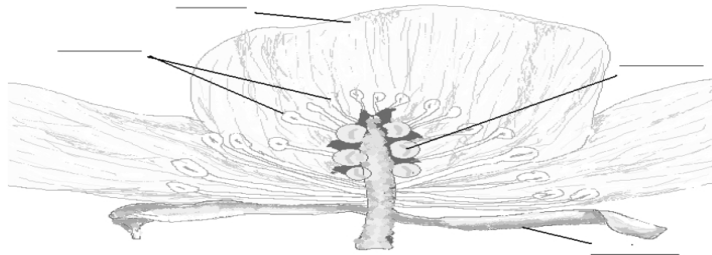


GOOD LUCK!

1. The purpose of the root is to
 - a) attach the plant to the ground.
 - b) suck water from the soil.
 - c) keep the plant erect.
2. The two main root types are
 - a) main stem and minor stem.
 - b) fibrous rootage and miner stem.
 - c) main stem and fibrous rootage.
3. Leaves can vary in their appears by their
 - a) shape
 - b) edge
 - c) temperature
 - d) surface
 - e) odour
 - f) veins
4. A leaf attaches itself to the tree by its
 - a) veins.
 - b) insertion.
 - c) leaf blade.
 - d) leaf stalk.
5. Many yard plants' stems grow horizontally. Such stems are called
 - a) runners.
 - b) walkers.
 - c) standers.
 - d) sitters.
6. Most plants produce
 - a) just a few seeds.
 - b) a vast number of seeds.
 - c) one seed.
7. Some plants produce delicious coloured berries or fruits to
 - a) attract other plants.
 - b) attract birds.
 - c) attract people.
 - d) have fun.
8. Ruska means that deciduous trees and grass plants
 - a) are dying
 - b) are getting ready to drop their leaves
 - c) show their autumn colours
9. Grass plants can pass winter in their
 - a) bulb
 - b) taproot
 - c) ground stem
 - c) bud
10. Common yard plants are
 - a) fireweed
 - b) dandelion
 - c) knotgrass
 - d) greater plantain

____p / 38

2. Name the flower parts and colour the picture.



____p / 4p