

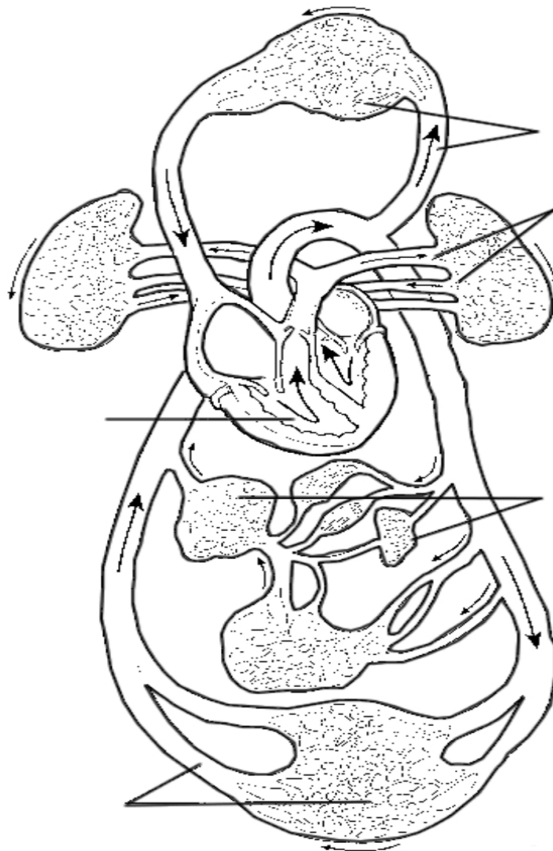
Name \_\_\_\_\_

## Overview of the Circulatory System

Fill in the blanks to trace the path of blood through the circulatory system

From the right atrium to the (1) \_\_\_\_\_ through the (2) \_\_\_\_\_ valve to the pulmonary trunk to the right and left (3) \_\_\_\_\_, to the capillary beds of the (4) \_\_\_\_\_, to the (5) \_\_\_\_\_, to the (6) \_\_\_\_\_ of the heart through the (7) \_\_\_\_\_ valve, to the (8) \_\_\_\_\_ through the (9) \_\_\_\_\_ semilunar valve, to the (10) \_\_\_\_\_, to the systemic arteries, to the (11) \_\_\_\_\_ of the body tissues, to the system veins, to the (12) \_\_\_\_\_ and (13) \_\_\_\_\_, which enter the right atrium of the heart.

1. \_\_\_\_\_
2. \_\_\_\_\_
3. \_\_\_\_\_
4. \_\_\_\_\_
5. \_\_\_\_\_
6. \_\_\_\_\_
7. \_\_\_\_\_
8. \_\_\_\_\_
9. \_\_\_\_\_
10. \_\_\_\_\_
11. \_\_\_\_\_
12. \_\_\_\_\_
13. \_\_\_\_\_



### Label the Diagram

- A – Vessels serving the head and upper limbs
- B – Vessels serving the body trunk and lower limbs
- C – Vessels serving the viscera
- D – Pulmonary Circulation
- E – Pulmonary “Pump”
- F – Systemic “Pump”