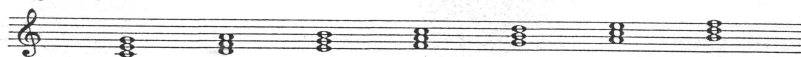


Roman Numeral Analysis Symbols

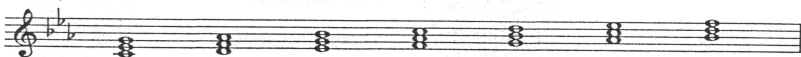
Diatonic Triads

Major



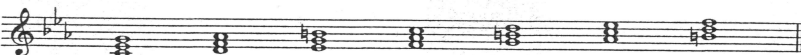
CM: I ii iii IV V vi vii°

Natural Minor



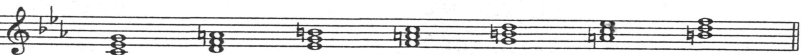
cm: i ii° III iv v VI VII

Harmonic Minor



cm: i ii° III+ iv V VI vii°

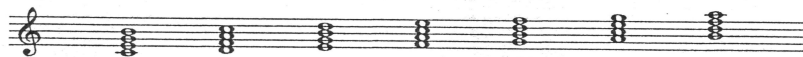
Melodic Minor



cm: i ii III+ IV V vi° vii°

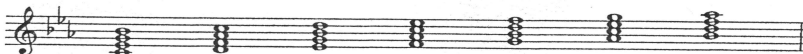
Diatonic Seventh Chords

Major



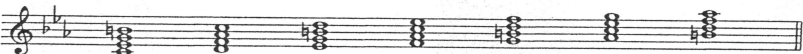
CM: I⁷ ii⁷ iii⁷ IV⁷ V⁷ vi⁷ vii^{°7}

Natural Minor



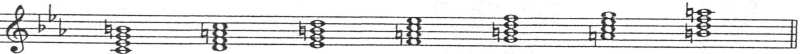
cm:i⁷ ii^{°7} III⁷ iv⁷ v⁷ VI⁷ VII^{7m}

Harmonic Minor



cm: i^{7M} ii^{°7} III^{+7M} iv⁷ V⁷ VI⁷ vii^{°7}

Melodic Minor



cm: i^{7M} ii⁷ III^{+7M} IV^{7m} V⁷ vi^{°7} vii^{°7}