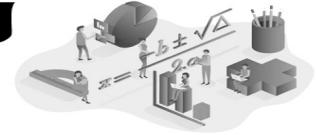


Name: _____

Date: _____

Simplifying and Solving Equations



Determine the value of the unknown in each equation.

1. $-24l + 3 \cdot 23+2 = (6+6)2+15 -32l$

2. $(5+4)2+2 + 30a=21a + 6 \cdot 16+5$

3. $40f + 3 \cdot 5+2 = (5+2)2+8 + 45f$

4. $(2+5)2+12 + 25c = 19c + 6 \cdot 13+1$

5. $43y + 3 \cdot -9+1 = -(1+5)2-12 + 45y$

6. $-88f + 3 \cdot -8+1 = (1+2)2+4 -84f$

7. $-(5+1)2-1 + 52c = 57c + 5 \cdot -10+3$

8. $-37f + 2 \cdot 2+0 = (3+2)2+9 -40f$

9. $26p + 3 \cdot -5+2 = -(1+0)2 + 30p$

10. $-87x + 6 \cdot -10+3 = -(6+2)2-9 -89x$
