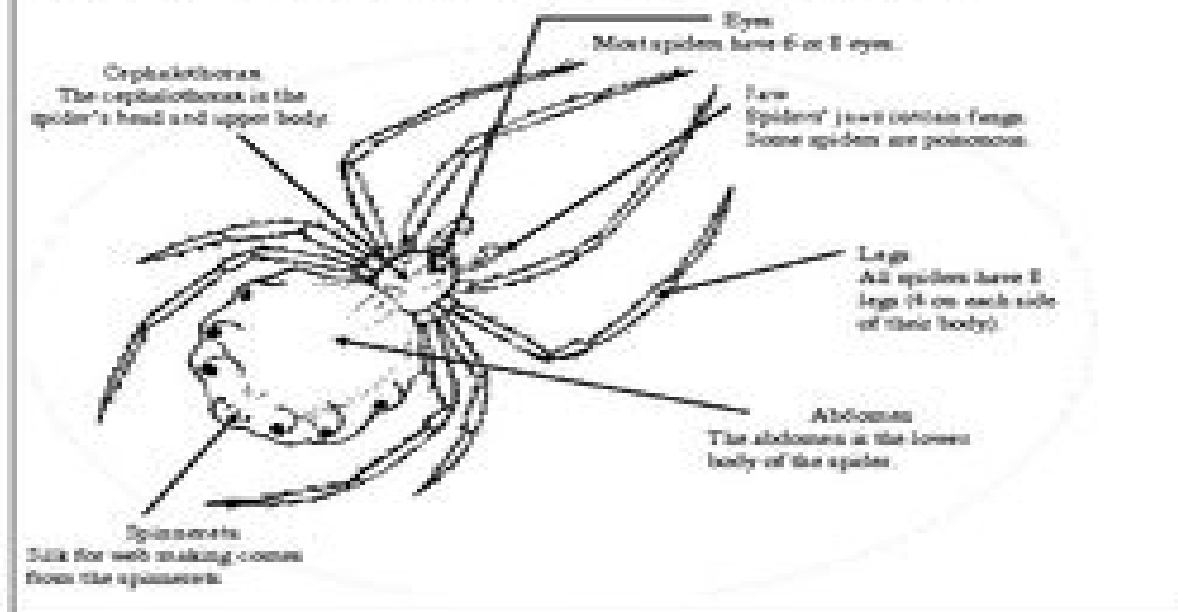


Parts of a Spider

A spider is an arachnid. It has 2 main body parts. Study the diagram to learn about the parts of a spider.



Parts of a Spider Snack

Materials:

- 2 Oreo cookies
- 10 mini M&M's
- 8 pretzel sticks
- Peanut butter

Directions:

1. Use peanut butter to attach the 2 cookies together to form the spider's cephalothorax and abdomen.
2. Break a pretzel stick in half. Use the halves to form the spider's jaw.
2. Insert the pretzel sticks into the cephalothorax to form the spider's legs.
3. Use peanut butter to attach 8 M&M's to the spider to form eyes. Attach the remaining M&M's to form the spinnerets.