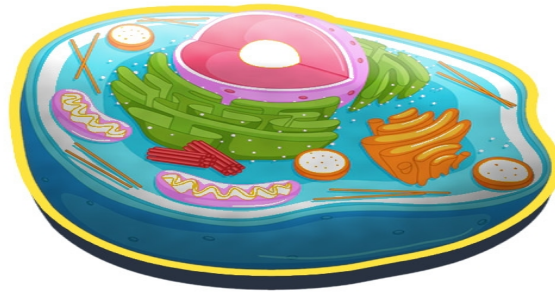


# Cell Organelle Functions

Name: \_\_\_\_\_

Date: \_\_\_\_\_



| Cell Organelle  | Biological Function                            | Factory Part                                       |
|-----------------|--|--|
| Nucleus         | DNA Storage                                    | Files and blueprints management                    |
| Mitochondrion   | Energy production                              | Powerplant   |
| Ribosome        | Protein synthesis                              | Machine to product toys                            |
| Rough ER        | Protein production and modification            | Coordination of toy production line and decoration |
| Smooth ER       | Lipid production and Detoxification            | Accessory production                               |
| Golgi apparatus | Protein transportation and export              | Packaging and shipping department                  |
| Peroxisome      | Lipid breakdown; redox reactions               | Hazard chemical handling                           |
| Lysosome        | Protein destruction                            | Recycling  |
| Cytoskeleton    | Cell movement; intracellular transportation    | Conveyor system                                    |
| Cell Membrane   | Define the inside and outside of a cell        | Factory building                                   |
| Cell Wall       | Structural support and protection (plant cell) | Reinforced factory building                        |
| Cytosol         | Cellular fluid                                 | Internal space and floor plan                      |
| Chloroplast     | Photosynthesis (plant cell)                    | Solar panels                                       |
| Vacuole         | Storage and water regulation (plant cell)      | Storage spaces                                     |