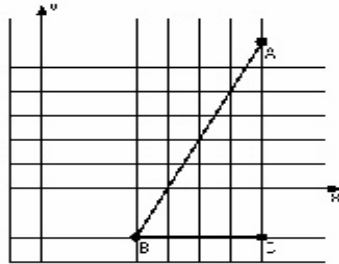


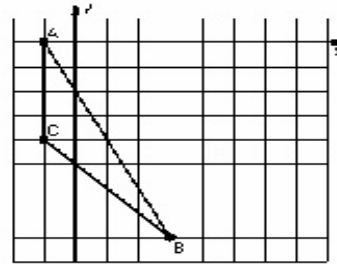
Dilations (C)

Instructions: Draw and label the dilated image for each triangle.
Label the center of dilation.

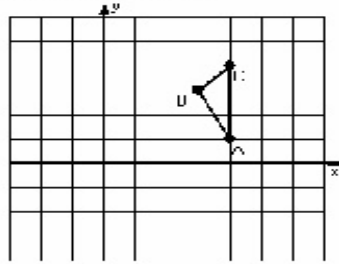
1) Dilation scale = $1/2$, center $D(-1, 0)$



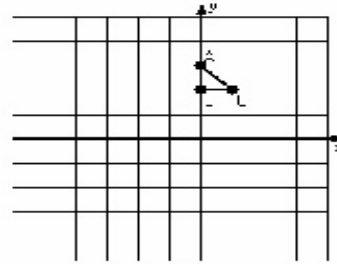
2) Dilation scale = $1/2$, center $D(3, -1)$



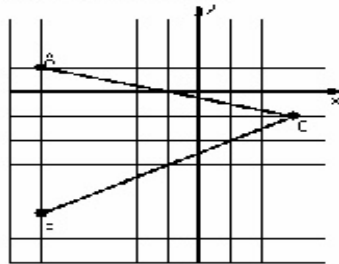
3) Dilation scale = 2, center $D(5, 4)$



4) Dilation scale = 4, center $D(1, 3)$



5) Dilation scale = $1/2$, center $D(-5, 5)$



6) Dilation scale = $1/3$, center $D(-1, -3)$

