

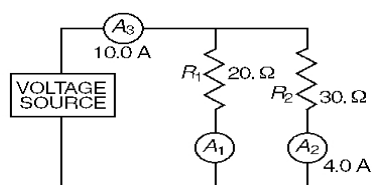
Name: _____

Parallel Circuits Worksheet

Show all work (including equations, substitutions and units) for full credit.

Questions 1 and 2 refer to the following:

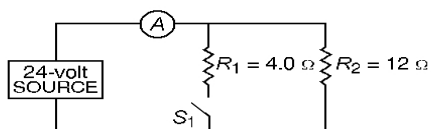
The diagram below shows two resistors and three ammeters connected to a voltage source.



1) What is the potential difference across the source in the circuit shown?

2) What is the current reading of ammeter A_1 in the circuit shown?

Questions 3 and 4 refer to the following:

3) If switch S_1 in the given diagram is open, the reading of ammeter A is4) If switch S_1 in the given diagram is closed, the equivalent resistance of the circuit is